

C.I.P.

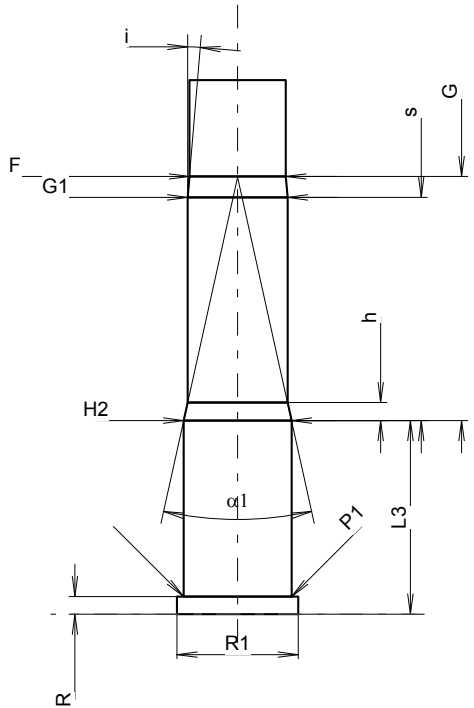
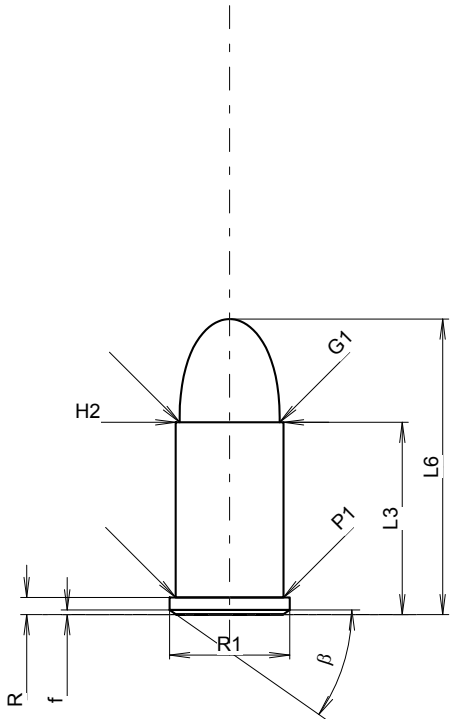
32 S&W

Country of Origin: US

TAB. IV

Date 84-06-14

Revision 08-09-23



Scale 1.66:1

Dimensions in << mm >>
Dimensions and Tolerances for Proof Barrels
see Appendix CR 1.

CARTRIDGE MAXI

Lengths

L1	=	
L2	=	
L3 ¹⁾	=	15.37
L4	=	
L5	=	
L6	=	23.62

Case Head

R ¹⁾	=	1.37	-0.25
R1	=	9.60	
R3	=		
E	=		
E1	=		
e min	=		
delta	=		
f	=	0.38	
beta	=	35°	

Powder Chamber

P1	=	8.61
P2	=	

Junction Cone

alpha	=	
S	=	
r1 min	=	
r2	=	

Collar

H1	=	
H2 ¹⁾	=	8.61

Projectile

G1 ¹⁾	=	8.00
G2	=	
F	=	
L3+G ¹⁾	=	34.88

**Pressures (Energies)
Method Transducer**

Pmax	=	900 bar
PK	=	1035 bar
PE	=	1170 bar
M	=	8.00

Miscellaneous Dimensions

Fe ¹⁾⁶⁾	=	0.25
delta L	=	

CHAMBER MINI

Lengths

L1	=	
L2	=	
L3 ¹⁾	=	15.47

Breech

R ¹⁾	=	1.40
R1	=	9.70
R2	=	
R3	=	
r	=	

Powder Chamber

E	=	
P1 ¹⁾	=	8.64
P2	=	

Junction Cone

alpha	=	
S	=	
r1 max	=	
r2	=	

Collar

H1	=	
H2 ¹⁾	=	8.62

Commencement of Rifling

G1 ¹⁾ *	=	7.98
G ¹⁾	=	19.51
alpha1 *	=	25°
h	=	1.44
s	=	17.83
i ¹⁾ *	=	4°45'
w	=	

Barrel

F ¹⁾ *	=	7.70
Z ¹⁾	=	7.92

Grooves

b	=	2.41
N	=	5
u	=	476.00
Q	=	47.91 mm ²

Notes: 1) Check for safety reasons
6) Headspace on Case Mouth
* Basic dimensions