

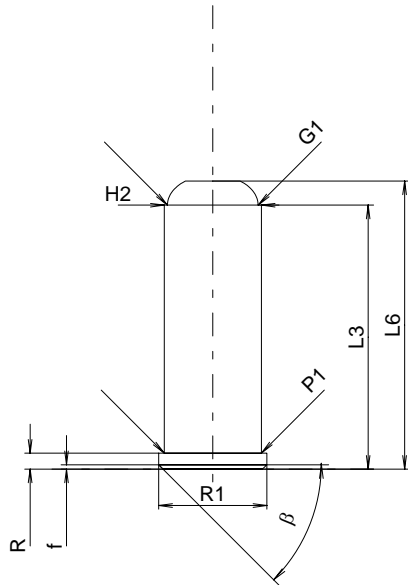
**C.I.P.****32 S&W Long Wad Cut.**

TAB. IV

Date 84-06-14

Country of Origin: DE/FI

Revision 00-06-07

**CARTRIDGE MAXI****Lengths**

L1	=	
L2	=	
L3 <sup>1)</sup>	=	23.27
L4	=	
L5	=	
L6	=	25.40

**Case Head**

R <sup>1)</sup>	=	1.40	-0.25
R1	=	9.53	
R3	=		
E	=		
E1	=		
e min	=		
δ	=		
f	=	0.38	
β	=	45°	

**Powder Chamber**

P1	=	8.56
P2	=	

**Junction Cone**

α	=	
S	=	
r1 min	=	
r2	=	

**Collar**

H1	=	
H2 <sup>1)</sup>	=	8.56

**Projectile**

G1 <sup>1)</sup>	=	8.00
G2	=	
F	=	
L3+G <sup>1)</sup>	=	26.31

**Pressures (Energies)****Method Transducer**

Pmax	=	1550 bar
PK	=	1783 bar
PE	=	2015 bar
M	=	8.00

**Miscellaneous Dimensions**

Fe <sup>1)</sup>	=	0.25
delta L	=	

**CHAMBER MINI****Lengths**

L1	=	
L2	=	
L3 <sup>1)</sup>	=	23.90

**Breech**

R <sup>1)</sup>	=	1.40
R1	=	9.63
R2	=	
R3	=	
r	=	

**Powder Chamber**

E	=	
P1 <sup>1)</sup>	=	8.59
P2	=	

**Junction Cone**

α	=	
S	=	
r1 max	=	
r2	=	

**Collar**

H1	=	
H2 <sup>1)</sup>	=	8.57

**Commencement of Rifling**

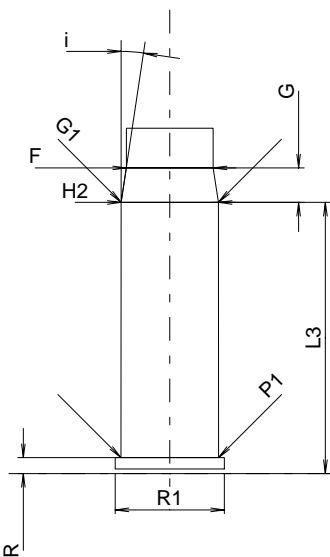
G1 <sup>1)*</sup>	=	8.57
G <sup>1)*</sup>	=	3.04
α1	=	
h	=	
s <sup>*</sup>	=	
i <sup>1)</sup>	=	8°30'
w	=	

**Barrel**

F <sup>1)*</sup>	=	7.66
Z <sup>1)</sup>	=	7.92

**Grooves**

b	=	2.41
N	=	5
u	=	476.00
Q	=	47.87 mm <sup>2</sup>



Scale 1.5:1

Dimensions in << mm >>  
Dimensions and Tolerances for Proof Barrels  
see Appendix CR 1.

Notes: 1) Check for safety reasons  
\* Basic dimensions