

# C.I.P.

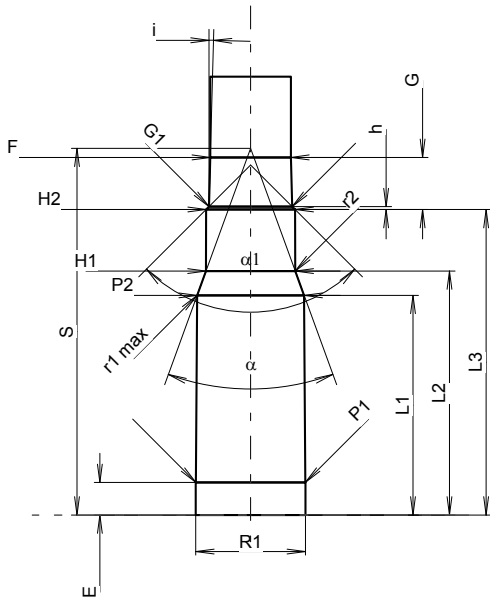
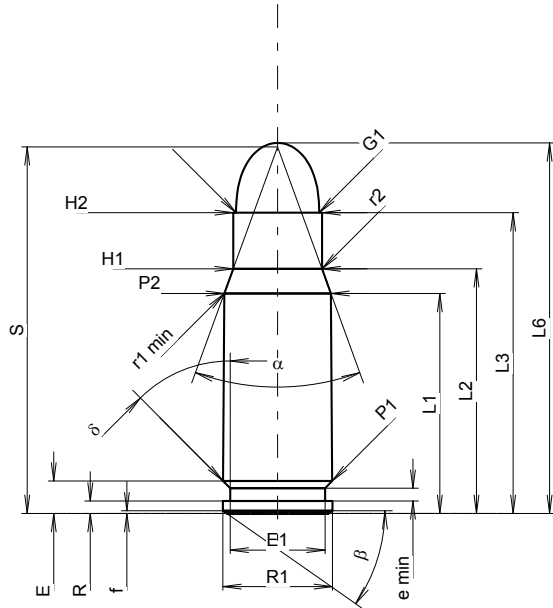
## 357 Auto Mag.

Country of Origin: US

TAB. IV

Date 84-06-14

Revision 08-09-23



Scale 1.21:1

Dimensions in << mm >>  
Dimensions and Tolerances for Proof Barrels  
see Appendix CR 1.

### CARTRIDGE MAXI

#### Lengths

L1 <sup>1)</sup>	=	24.13	-0.20
L2 <sup>1)</sup>	=	26.83	-0.20
L3 <sup>1)</sup>	=	33.00	
L4	=		
L5	=		
L6	=	40.65	

#### Case Head

R	=	1.37	
R1	=	12.01	
R3	=		
E	=	3.56	
E1	=	10.40	
e min	=	1.40	
delta	=	45°	
f	=	0.30	
beta	=	35°	

#### Powder Chamber

P1	=	11.97	
P2 <sup>1)</sup> *	=	11.71	-0.20

#### Junction Cone

alpha *	=	40°	
S *	=	40.22	
r1 min	=	1.00	
r2	=	3.20	

#### Collar

H1 *	=	9.75	
H2 <sup>1)</sup>	=	9.75	

#### Projectile

G1 <sup>1)</sup>	=	9.12	
G2	=		
F	=		
L3+G <sup>1)</sup>	=	38.73	

#### Pressures (Energies)

#### Method Transducer

Pmax	=	2550 bar	
PK	=	2933 bar	
PE	=	3315 bar	
M	=	17.50	

#### Miscellaneous Dimensions

Fe <sup>1)3)</sup>	=	0.15	
delta L	=		

### CHAMBER MINI

#### Lengths

L1	=	24.09	
L2	=	26.76	
L3 <sup>1)</sup>	=	33.50	

#### Breech

R	=	1.37	
R1	=	12.04	
R2	=		
R3	=		
r	=		

#### Powder Chamber

E	=	3.56	
P1 <sup>1)</sup>	=	11.99	
P2 *	=	11.74	

#### Junction Cone

alpha <sup>1)</sup> *	=	40°	
S *	=	40.22	
r1 max	=	1.00	
r2	=	3.20	

#### Collar

H1 *	=	9.80	
H2 <sup>1)</sup>	=	9.78	

#### Commencement of Rifling

G1 <sup>1)</sup> *	=	9.13	
G <sup>1)</sup>	=	5.73	
alpha1 *	=	90°	
h	=	0.32	
s	=		
i <sup>1)</sup> *	=	1°32'17"	
w	=		

#### Barrel

F <sup>1)</sup> *	=	8.84	
Z <sup>1)</sup>	=	9.09	

#### Grooves

b	=	2.69	
N	=	6	
u	=	457.00	
Q	=	63.42	mm <sup>2</sup>

Notes: 1) Check for safety reasons  
3) Headspace on Shoulder  
\* Basic dimensions