

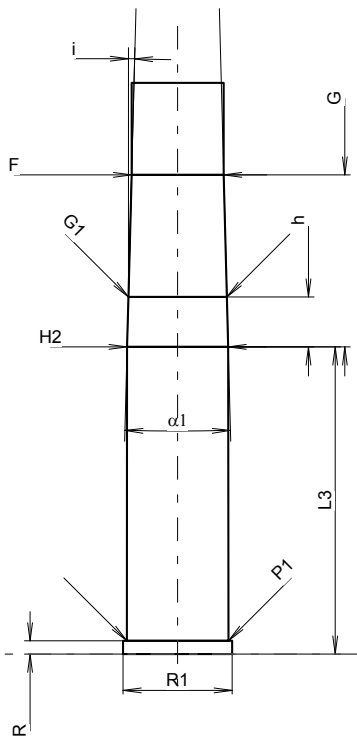
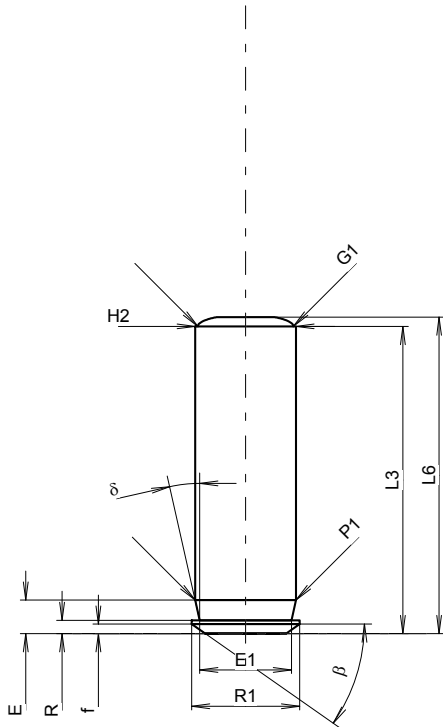
C.I.P.**38 Spl. AMU**

Country of Origin: US

TAB. IV

Date 84-06-14

Revision 08-09-23



Scale 1.39:1

Dimensions in << mm >>
 Dimensions and Tolerances for Proof Barrels
 see Appendix CR 1.

CARTRIDGE MAXI**Lengths**

L1	=	
L2	=	
L3 ¹⁾	=	29.34
L4	=	
L5	=	
L6	=	30.23

Case Head

R ¹⁾	=	1.27	-0.25
R1	=	10.31	
R3	=		
E	=	3.20	
E1	=	8.76	
e min	=		
delta	=	12°42'05"	
f	=	0.91	
beta	=	35°	

Powder Chamber

P1	=	9.63
P2	=	

Junction Cone

alpha	=	
S	=	
r1 min	=	
r2	=	

Collar

H1	=	
H2 ¹⁾	=	9.63

Projectile

G1 ¹⁾	=	9.11
G2	=	
F	=	
L3+G ¹⁾	=	45.76

Pressures (Energies)**Method Transducer**

Pmax	=	1250 bar
PK	=	1438 bar
PE	=	1625 bar
M	=	10.50

Miscellaneous Dimensions

Fe ¹⁾⁴⁾	=	0.25
delta L	=	

CHAMBER MINI**Lengths**

L1	=	
L2	=	
L3 ¹⁾	=	29.34

Breech

R ¹⁾	=	1.27
R1	=	10.41
R2	=	
R3	=	
r	=	

Powder Chamber

E	=	
P1 ¹⁾	=	9.71
P2	=	

Junction Cone

alpha	=	
S	=	
r1 max	=	
r2	=	

Collar

H1	=	
H2 ¹⁾	=	9.65

Commencement of Rifling

G1 ¹⁾ *	=	9.40
G ¹⁾	=	16.42
alpha1 *	=	3°
h	=	4.77
s	=	
i ¹⁾ *	=	1°30'
w	=	

Barrel

F ¹⁾ *	=	8.79
Z ¹⁾	=	9.02

Grooves

b	=	3.07
N	=	6
u	=	356.00
Q	=	62.85 mm ²

Notes: 1) Check for safety reasons
 4) Headspace on Rim
 * Basic dimensions