

C.I.P.

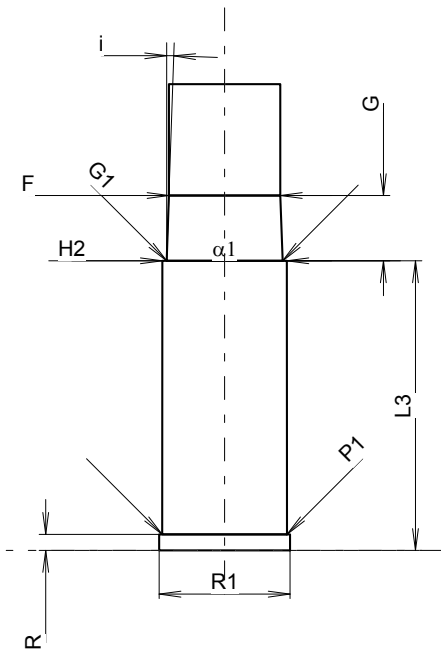
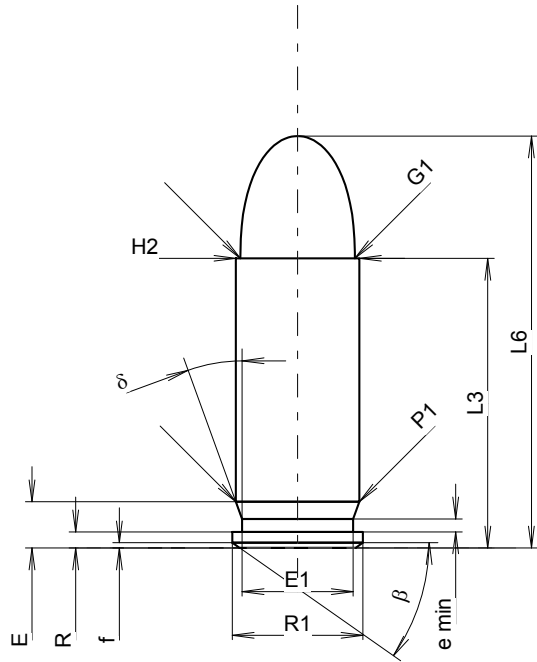
38 Super Auto

Country of Origin: US

TAB. IV

Date 84-06-14

Revision 08-09-23



Scale 1.68:1

CARTRIDGE MAXI

Lengths

L1	=	
L2	=	
L3 ¹⁾	=	22.86
L4	=	
L5	=	
L6	=	32.51

Case Head

R ¹⁾	=	1.27	-0.25
R1	=	10.31	
R3	=		
E	=	3.65	
E1	=	8.76	
e min	=	1.02	
delta	=	20°	
f	=	0.41	
beta	=	35°	

Powder Chamber

P1	=	9.75
P2	=	

Junction Cone

alpha	=	
S	=	
r1 min	=	
r2	=	

Collar

H1	=	
H2 ¹⁾	=	9.75

Projectile

G1 ¹⁾	=	9.04
G2	=	
F	=	
L3+G ¹⁾	=	28.01

Pressures (Energies)

Method Transducer

Pmax	=	2300 bar
PK	=	2645 bar
PE	=	2990 bar
M	=	12.50

Miscellaneous Dimensions

Fe ¹⁾⁶⁾	=	0.30
delta L	=	

CHAMBER MINI

Lengths

L1	=	
L2	=	
L3 ¹⁾	=	22.86

Breech

R ¹⁾	=	1.27
R1	=	10.34
R2	=	
R3	=	
r	=	

Powder Chamber

E	=	
P1 ¹⁾	=	9.85
P2	=	

Junction Cone

alpha	=	
S	=	
r1 max	=	
r2	=	

Collar

H1	=	
H2 ¹⁾	=	9.83

Commencement of Rifling

G1 ¹⁾ *	=	9.15
G ¹⁾	=	5.15
alpha 1 *	=	180°
h	=	
s	=	
i ¹⁾ *	=	2°
w	=	

Barrel

F ¹⁾ *	=	8.79
Z ¹⁾	=	9.02

Grooves

b	=	3.07
N	=	6
u	=	406.00
Q	=	62.85 mm ²

Dimensions in << mm >>
Dimensions and Tolerances for Proof Barrels
see Appendix CR 1.

Notes: 1) Check for safety reasons
6) Headspace on Case Mouth
* Basic dimensions