

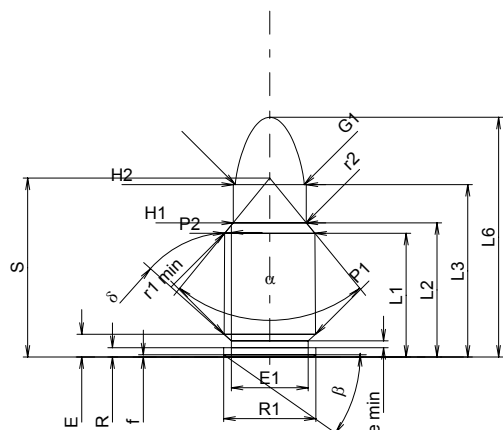
C.I.P.**38-45 ACP**

TAB. IV

Date 84-06-14

Revision 00-06-07

Country of Origin: US

**CARTRIDGE MAXI****Lengths**

L1 ¹⁾	=	16.35	-0.20
L2 ¹⁾	=	17.75	-0.20
L3 ¹⁾	=	22.80	
L4	=		
L5	=		
L6	=	31.70	

Case Head

R	=	1.24	
R1	=	12.19	
R3	=		
E	=	3.01	
E1	=	10.15	
e min	=	0.90	
delta	=	45°	
f	=	0.30	
beta	=	35°	

Powder Chamber

P1	=	12.10	
P2 ^{1)*}	=	11.94	-0.20

Junction Cone

alpha [*]	=	78°30'	
S [*]	=	23.66	
r1 min	=	1.20	
r2	=	1.20	

Collar

H1 [*]	=	9.65	
H2 ¹⁾	=	9.65	

Projectile

G1 ¹⁾	=	9.12	
G2	=		
F	=		
L3+G ¹⁾	=	28.16	

Pressures (Energies)**Method Transducer**

Pmax	=	2350 bar	
PK	=	2703 bar	
PE	=	3055 bar	
M	=	12.50	

Miscellaneous Dimensions

Fe ¹⁾	=	0.20	
delta L	=		

CHAMBER MINI**Lengths**

L1	=	16.33	
L2	=	17.72	
L3 ¹⁾	=	23.10	

Breech

R	=	1.24	
R1	=	12.22	
R2	=		
R3	=		
r	=		

Powder Chamber

E	=	3.01	
P1 ¹⁾	=	12.15	
P2 [*]	=	11.98	

Junction Cone

alpha ^{1)*}	=	78°30'	
S [*]	=	23.66	
r1 max	=	1.20	
r2	=	1.50	

Collar

H1 [*]	=	9.70	
H2 ¹⁾	=	9.68	

Commencement of Rifling

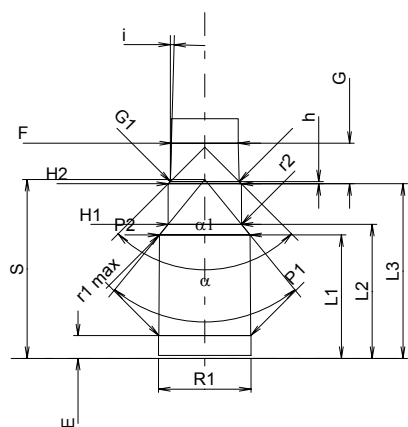
G1 ^{1)*}	=	9.13	
G ¹⁾	=	5.36	
alpha1 [*]	=	90°	
h	=	0.28	
s	=		
i ^{1)*}	=	1°38'05"	
w	=		

Barrel

F ^{1)*}	=	8.84	
Z ¹⁾	=	9.09	

Grooves

b	=	2.80	
N	=	6	
u	=	475.00	
Q	=	63.51	mm ²



Scale 1:1

Dimensions in << mm >>
Dimensions and Tolerances for Proof Barrels
see Appendix CR 1.

Notes: 1) Check for safety reasons
* Basic dimensions