

C.I.P.

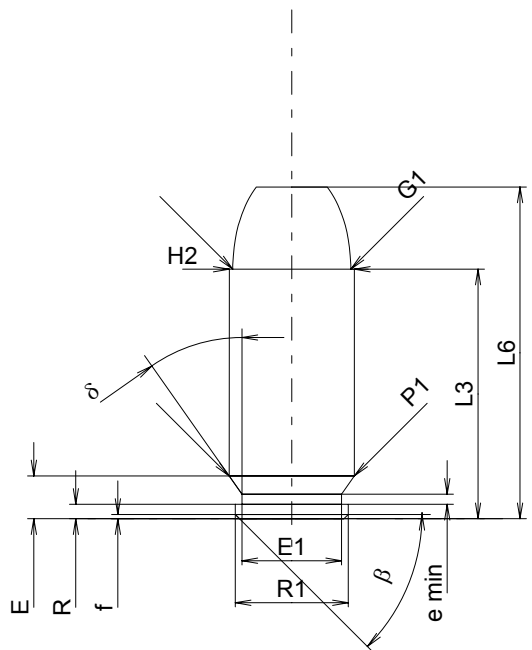
41 ACT EXP

TAB. IV

Date 86-12-03

Country of Origin: IL

Revision 00-06-07



CARTRIDGE MAXI

Lengths

L1	=		
L2	=		
L3 ¹⁾	=	22.00	-0.25
L4	=		
L5	=		
L6	=	29.25	

Case Head

R	=	1.27	
R1	=	9.96	
R3	=		
E	=	3.77	
E1	=	8.79	
e min	=	0.89	
delta	=	35°	
f	=	0.38	
beta	=	45°	

Powder Chamber

P1	=	11.05	
P2	=		

Junction Cone

alpha	=		
S	=		
r1 min	=		
r2	=		

Collar

H1	=		
H2 ¹⁾	=	11.03	

Projectile

G1 ¹⁾	=	10.41	
G2	=		
F	=		
L3+G ¹⁾	=	29.06	

Pressures (Energies)

Method Transducer

Pmax	=	2250 bar	
PK	=	2588 bar	
PE	=	2925 bar	
M	=	10.50	

Miscellaneous Dimensions

Fe ¹⁾	=	0.30	
delta L	=		

CHAMBER MINI

Lengths

L1	=		
L2	=		
L3 ¹⁾	=	22.02	

Breech

R	=	2.54	
R1	=	11.11	
R2	=		
R3	=		
r	=		

Powder Chamber

E	=	5.08	
P1 ¹⁾	=	11.10	
P2	=		

Junction Cone

alpha	=		
S	=		
r1 max	=		
r2	=		

Collar

H1	=		
H2 ¹⁾	=	11.05	

Commencement of Rifling

G1 ^{1)*}	=	10.44	
G ¹⁾	=	7.06	
alpha1 [*]	=	180°	
h	=		
s	=	2.62	
j ^{1)*}	=	2°	
w	=		

Barrel

F ^{1)*}	=	10.13	
Z ¹⁾	=	10.39	

Grooves

b	=	2.00	
N	=	6	
u	=	360.00	
Q	=	82.17	mm ²

Scale 1.5:1

Dimensions in << mm >>
Dimensions and Tolerances for Proof Barrels
see Appendix CR 1.

Notes: 1) Check for safety reasons
* Basic dimensions