

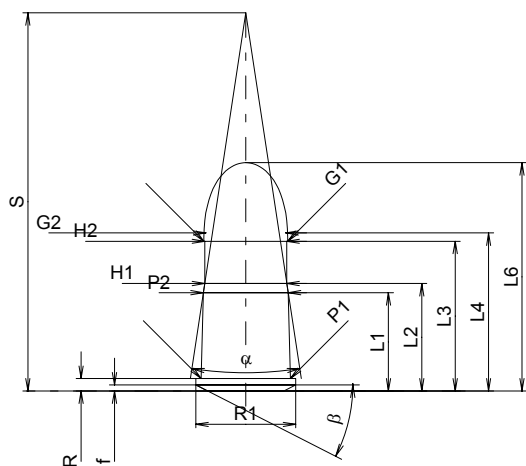
C.I.P.**10,40 Ord. It.**

TAB. IV

Date 84-06-14

Pays d'origine: IT

Révision 00-06-07

**CARTOUCHE MAXI****Longueurs**

L1 [*]	=	13.00
L2 [*]	=	14.22
L3 ¹⁾	=	19.80
L4	=	20.90
L5	=	
L6	=	30.20

Culot

R ¹⁾	=	1.65	-0.25
R1	=	13.20	
R3	=		
E	=		
E1	=		
e min	=		
delta	=		
f	=	0.80	
beta	=	27°	

Chambre à poudre

P1	=	11.80
P2 [*]	=	11.23

Cône de raccordement

alpha	=	17°14'43"
S	=	50.03
r1 min	=	
r2	=	

Collet

H1 [*]	=	10.86
H2 ¹⁾	=	10.86

Projectile

G1 ¹⁾	=	11.10
G2	=	10.55
F	=	
L1+G ¹⁾	=	21.91

Pressions (Énergies)**Méthode transducteur**

Pmax	=	630 bar
PK	=	725 bar
PE	=	819 bar
M	=	10.50

Autres indications

Fe ¹⁾	=	0.25
delta L	=	

CHAMBRE MINI**Longueurs**

L1	=	
L2	=	
L3 ¹⁾	=	20.50

Cuvette

R ¹⁾	=	1.70
R1	=	13.25
R2	=	1.50
R3	=	
r	=	

Chambre à poudre

E	=	
P1 ¹⁾	=	11.85
P2	=	

Cône de raccordement

alpha	=	
S	=	
r1 max	=	
r2	=	

Collet

H1	=	
H2 ¹⁾	=	11.13

Prise de rayures

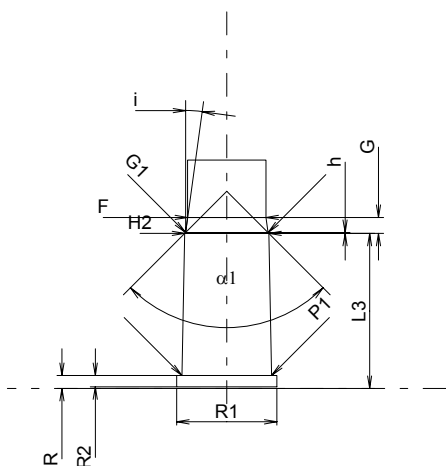
G1 ¹⁾ *	=	10.90
G ¹⁾ *	=	2.11
alpha1	=	90°
h [*]	=	0.11
s	=	
i ¹⁾	=	7°49'45"
w	=	

Canon

F ¹⁾ *	=	10.35
Z ¹⁾	=	10.75

Rayures

b	=	4.00
N	=	4
u	=	250.00
Q	=	87.42 mm ²



Échelle 1:1

Dimensions en << mm >>
Dimensions et tolérances pour les canons
d'épreuve: Voyez Annexe CR 1.

Notes: 1) A' contrôler pour la sécurité
* Dimensions de base