

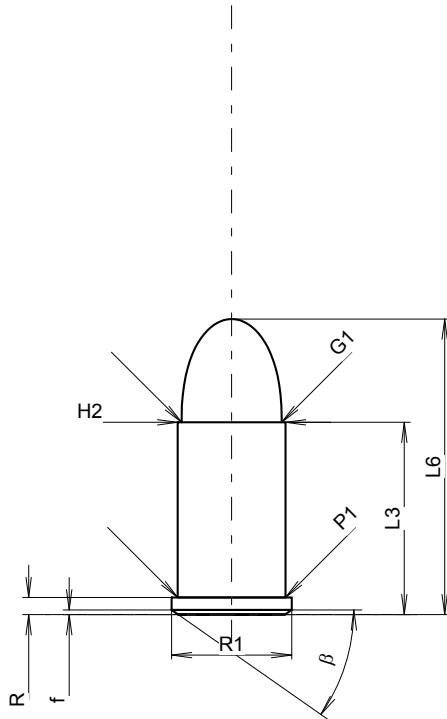
C.I.P.**32 S&W**

TAB. IV

Date 84-06-14

Pays d'origine: US

Révision 08-09-23

**CARTOUCHE MAXI****Longueurs**

L1	=	
L2	=	
L3 ¹⁾	=	15.37
L4	=	
L5	=	
L6	=	23.62

Culot

R ¹⁾	=	1.37	-0.25
R1	=	9.60	
R3	=		
E	=		
E1	=		
e min	=		
delta	=		
f	=	0.38	
beta	=	35°	

Chambre à poudre

P1	=	8.61
P2	=	

Cône de raccordement

alpha	=	
S	=	
r1 min	=	
r2	=	

Collet

H1	=	
H2 ¹⁾	=	8.61

Projectile

G1 ¹⁾	=	8.00
G2	=	
F	=	
L3+G ¹⁾	=	34.88

Pressions (Énergies)**Méthode transducteur**

Pmax	=	900 bar
PK	=	1035 bar
PE	=	1170 bar
M	=	8.00

Autres indications

Fe ¹⁾⁶⁾	=	0.25
delta L	=	

CHAMBRE MINI**Longueurs**

L1	=	
L2	=	
L3 ¹⁾	=	15.47

Cuvette

R ¹⁾	=	1.40
R1	=	9.70
R2	=	
R3	=	
r	=	

Chambre à poudre

E	=	
P1 ¹⁾	=	8.64
P2	=	

Cône de raccordement

alpha	=	
S	=	
r1 max	=	
r2	=	

Collet

H1	=	
H2 ¹⁾	=	8.62

Prise de rayures

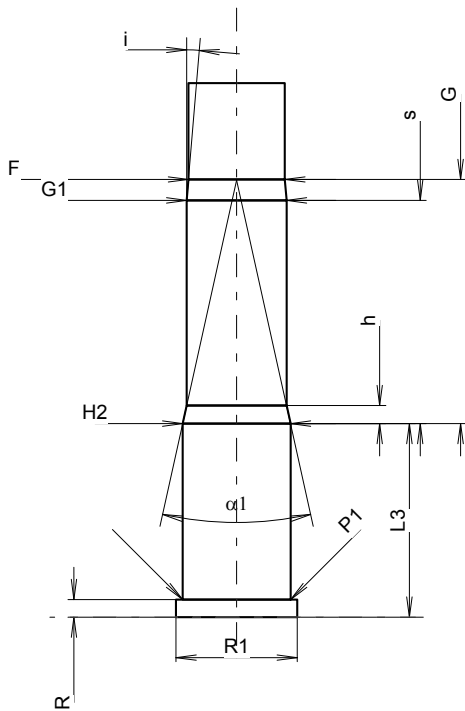
G1 ¹⁾ *	=	7.98
G ¹⁾	=	19.51
alpha1 *	=	25°
h	=	1.44
s	=	17.83
i ¹⁾ *	=	4°45'
w	=	

Canon

F ¹⁾ *	=	7.70
Z ¹⁾	=	7.92

Rayures

b	=	2.41
N	=	5
u	=	476.00
Q	=	47.91 mm ²



Échelle 1.66:1

Dimensions en << mm >>
Dimensions et tolérances pour les canons
d'épreuve: Voyez Annexe CR 1.

Notes: 1) A' contrôler pour la sécurité
6) Feuillure sur la bouche
* Dimensions de base