

# C.I.P.

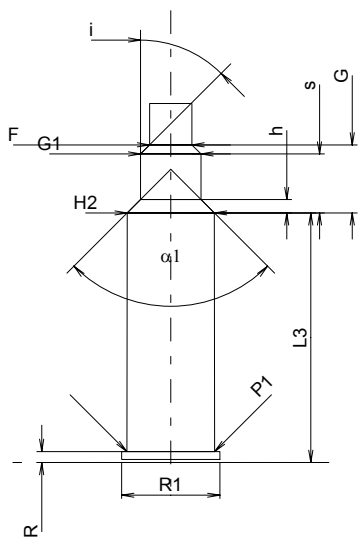
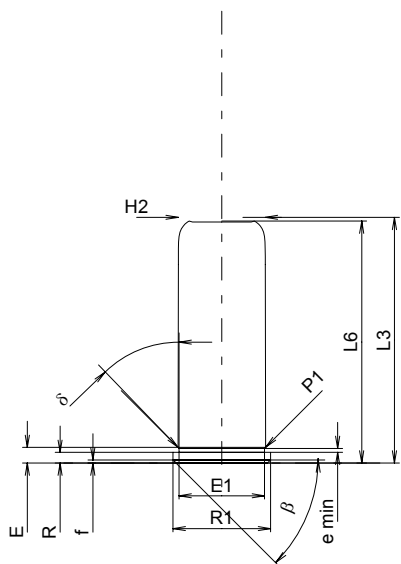
## 44 Mag. GR

Country of Origin: IT

TAB. IX

Date 93-05-28

Revision 00-06-07



### CARTRIDGE MAXI

#### Lengths

L1	=	
L2	=	
L3 <sup>1)</sup>	=	32.50
L4	=	
L5	=	
L6	=	32.00

#### Case Head

R <sup>1)</sup>	=	1.42
R1	=	12.88
R3	=	
E	=	2.06
E1	=	11.30
e min	=	0.50
delta	=	45°
f	=	0.40
beta	=	45°

#### Powder Chamber

P1 <sup>1)</sup>	=	11.57
P2	=	

#### Junction Cone

alpha	=	
S	=	
r1 min	=	
r2	=	

#### Collar

H1	=	
H2 <sup>1)</sup>	=	11.50

#### Projectile

G1	=	
G2	=	
F	=	
L3+G	=	

#### Pressures (Energies)

##### Method Transducer

Pmax	=	400 bar
PK	=	460 bar
PE	=	520 bar
M	=	17.50

#### Miscellaneous Dimensions

Fe	=	
delta L	=	

### CHAMBER MINI

#### Lengths

L1	=	
L2	=	
L3 <sup>1)</sup>	=	33.00

#### Breech

R <sup>1)</sup>	=	1.45
R1	=	13.00
R2	=	
R3	=	
r	=	

#### Powder Chamber

E	=	
P1 <sup>1)</sup>	=	11.60
P2	=	

#### Junction Cone

alpha	=	
S	=	
r1 max	=	
r2	=	

#### Collar

H1	=	
H2 <sup>1)</sup>	=	11.53

#### Commencement of Rifling

G1 <sup>1)*</sup>	=	8.00
G <sup>1)*</sup>	=	9.00
alpha1	=	90°
h	=	1.76
s*	=	7.80
i <sup>1)</sup>	=	45°
w	=	

#### Barrel

F <sup>1)*</sup>	=	5.60
Z <sup>1)</sup>	=	5.60

#### Grooves

b	=	
N	=	
u	=	
Q	=	24.63 mm <sup>2</sup>

Scale 1:1

Dimensions in << mm >>  
Dimensions and Tolerances for Proof Barrels  
see Appendix CR 6.

Notes: 1) Check for safety reasons  
\* Basic dimensions