

**C.I.P.**

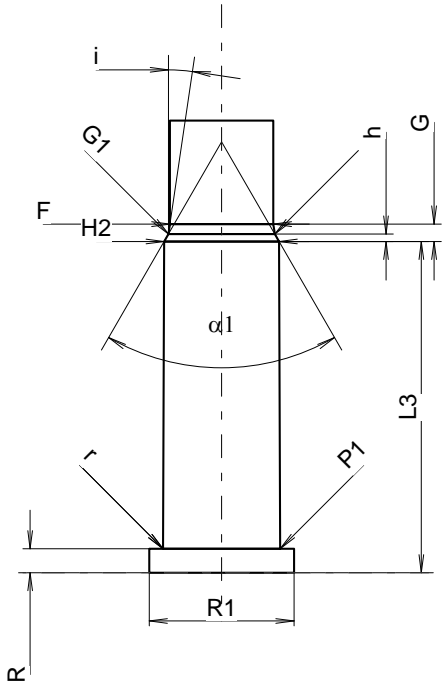
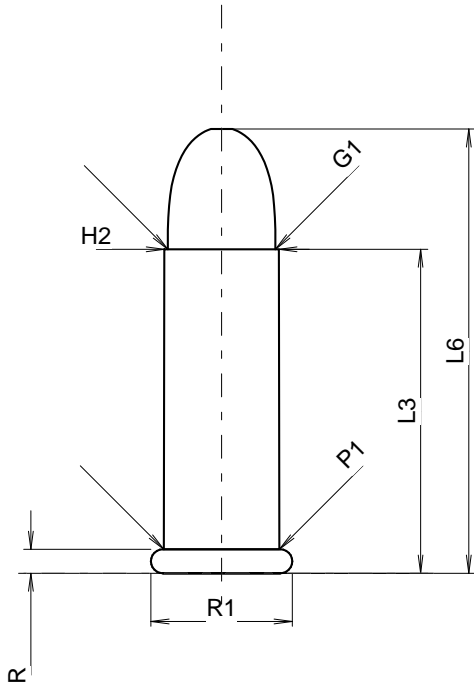
**22 Rem. Auto**

Country of Origin: US

TAB. V

Date 84-06-14

Revision 00-06-07



Scale 2.45:1

**CARTRIDGE MAXI**

**Lengths**

L1	=	
L2	=	
L3 <sup>1)</sup>	=	17.47
L4	=	
L5	=	
L6	=	23.95

**Case Head**

R <sup>1)</sup>	=	1.29	-0.18
R1	=	7.62	
R3	=		
E	=		
E1	=		
e min	=		
$\delta$	=		
f	=		
$\beta$	=		

**Powder Chamber**

P1	=	6.23
P2	=	

**Junction Cone**

$\alpha$	=	
S	=	
r1 min	=	
r2	=	

**Collar**

H1	=	
H2 <sup>1)</sup>	=	6.18

**Projectile**

G1 <sup>1)</sup>	=	5.80
G2	=	
F	=	
L3+G <sup>1)</sup>	=	18.41

**Pressures (Energies)**

**Method Crusher**

Pmax	=	1600 bar
PK	=	1840 bar
PE	=	2080 bar
M	=	19.27

**Miscellaneous Dimensions**

Fe <sup>1)</sup>	=	0.20
delta L	=	

**CHAMBER MINI**

**Lengths**

L1	=	
L2	=	
L3 <sup>1)</sup>	=	17.86

**Breech**

R <sup>1)</sup>	=	1.29
R1	=	7.80
R2	=	
R3	=	
r	=	0.13

**Powder Chamber**

E	=	
P1 <sup>1)</sup>	=	6.31
P2	=	

**Junction Cone**

$\alpha$	=	
S	=	
r1 max	=	
r2	=	

**Collar**

H1	=	
H2 <sup>1)</sup>	=	6.20

**Commencement of Rifling**

G1 *	=	5.74
G	=	0.94
$\alpha_1$ *	=	60°
h	=	0.40
s	=	
i *	=	8°27'29"
w	=	

**Barrel**

F <sup>1)</sup> *	=	5.58
Z <sup>1)</sup>	=	5.74

**Grooves**

b	=	
N	=	
u	=	
Q	=	mm <sup>2</sup>

Notes: 1) Check for safety reasons  
\* Basic dimensions

Dimensions in << mm >>  
Dimensions and Tolerances for Proof Barrels  
see Appendix CR 2.