

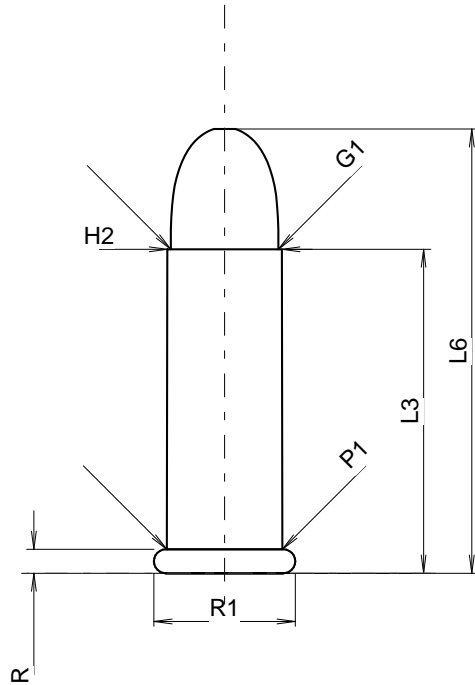
C.I.P.**22 Rem. Auto**

TAB. V

Datum 84-06-14

Revision 00-06-07

Ursprungsland: US

**PATRONE MAXI****Längen**

L1	=	
L2	=	
L3 ¹⁾	=	17.47
L4	=	
L5	=	
L6	=	23.95

Hülsenboden

R ¹⁾	=	1.29	-0.18
R1	=	7.62	
R3	=		
E	=		
E1	=		
e min	=		
δ	=		
f	=		
β	=		

Pulverkammer

P1	=	6.23
P2	=	

Schulterkonus

α	=	
S	=	
r1 min	=	
r2	=	

Hülsenhals

H1	=	
H2 ¹⁾	=	6.18

Geschoss

G1 ¹⁾	=	5.80
G2	=	
F	=	
L3+G ¹⁾	=	18.41

Drücke (Energien)**Crusher-Methode**

Pmax	=	1600 bar
PK	=	1840 bar
PE	=	2080 bar
M	=	19.27

Verschiedene Daten

Fe ¹⁾	=	0.20
delta L	=	

PATRONENLAGER MINI**Längen**

L1	=	
L2	=	
L3 ¹⁾	=	17.86

Stoßboden

R ¹⁾	=	1.29
R1	=	7.80
R2	=	
R3	=	
r	=	0.13

Pulverkammer

E	=	
P1 ¹⁾	=	6.31
P2	=	

Schulterkonus

α	=	
S	=	
r1 max	=	
r2	=	

Hülsenhals

H1	=	
H2 ¹⁾	=	6.20

Geschossübergang

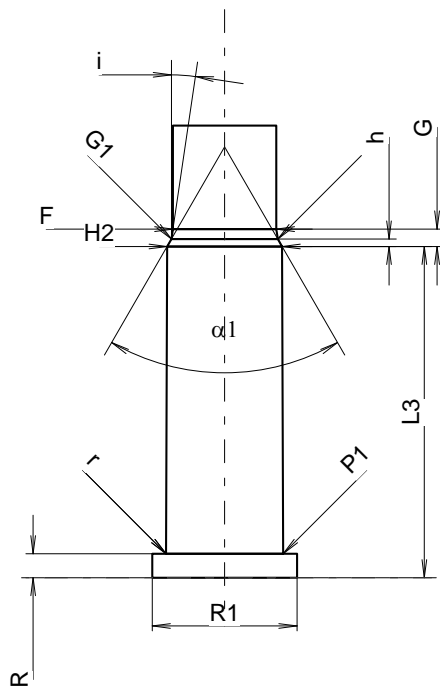
G1 *	=	5.74
G	=	0.94
α1 *	=	60°
h	=	0.40
s	=	
i *	=	8°27'29"
w	=	

Lauf

F ¹⁾ *	=	5.58
Z ¹⁾	=	5.74

Züge

b	=	
N	=	
u	=	
Q	=	mm ²



Maßstab 2.45:1

Maße in << mm >>
Maße und Toleranzen für Messläufe
siehe Anhang CR 2.

Bemerkungen: 1) Kontrolle aus Sicherheitsgründen
* Grundmaße