

C.I.P.**22 Piexon**

TAB.

VI

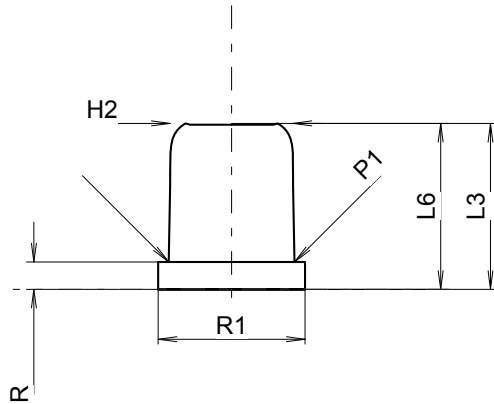
Datum

02-01-22

Revision

02-05-15

Ursprungsland: DE

**PATRONE MAXI****Längen**

L1	=	
L2	=	
L3 ¹⁾	=	10.00
L4	=	
L5	=	
L6	=	10.00

Hülsenboden

R	=	1.65
R1	=	8.85
R3	=	
E	=	-0.20
E1	=	
e min	=	
δ	=	
f	=	
β	=	

Pulverkammer

P1	=	7.59
P2	=	

Schulterkonus

α	=	
S	=	
r1 min	=	
r2	=	

Hülsenhals

H1	=	
H2 ¹⁾	=	7.40

Volumen [cm³]

VC	=	
Va 1	=	0.40
Va 2	=	

Drücke (Energien)**Energie [Va1]**

E _{max}	=	60.0 Joule
E _K	=	64.0 Joule
E _E	=	66.0 Joule

Verschiedene Daten

Fe	=	
delta L	=	

PATRONENLAGER MINI**Längen**

L1	=	
L2	=	
L3 ¹⁾	=	10.00

Stoßboden

R ¹⁾	=	1.50
R1	=	9.00
R2	=	
R3	=	
r	=	

Pulverkammer

E	=	
P1	=	7.62
P2	=	

Schulterkonus

α	=	
S	=	
r1 max	=	
r2	=	

Hülsenhals

H1	=	
H2	=	7.42

Geschossübergang

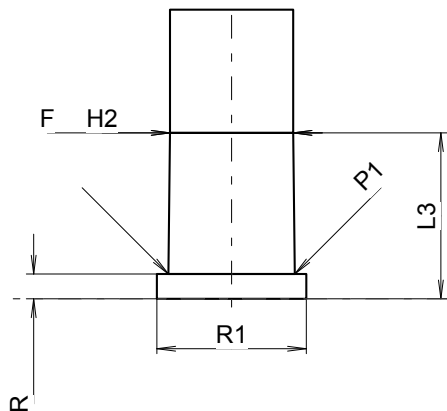
G1	=	
G	=	
α1	=	
h	=	
s	=	
i	=	
w	=	

Lauf

F *	=	7.42
Z	=	7.42

Volumen [cm³]

V(ET)	=	
V(T)	=	



Maßstab 2.2:1

Maße in << mm >>
Maße und Toleranzen für Messläufe
siehe Anhang CR 3.

Bemerkungen: 1) Kontrolle aus Sicherheitsgründen
* Grundmaße