

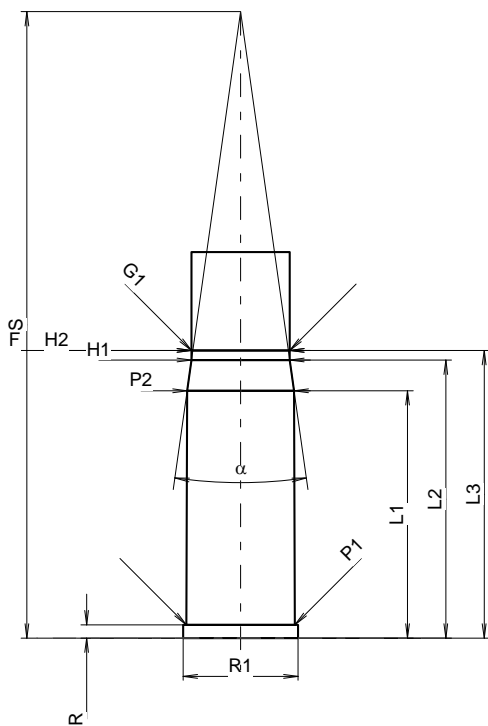
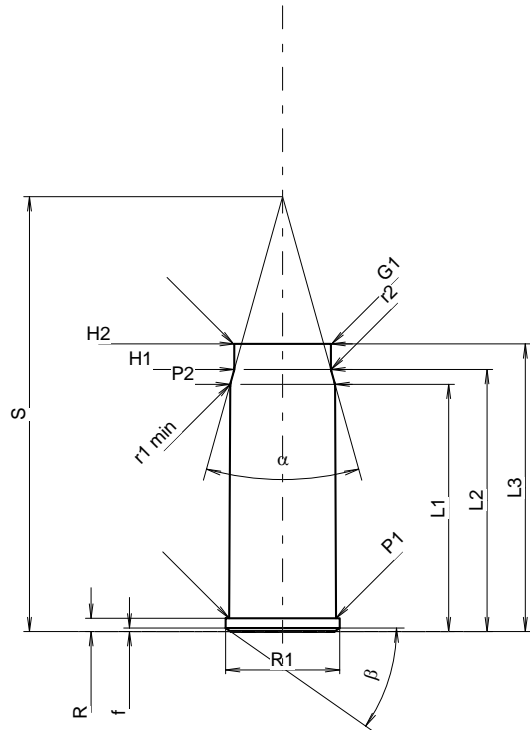
C.I.P.**45 PD ELP**

TAB. VI

Datum 12-05-30

Revision

Ursprungsland: DE



Maßstab 1.16:1

Maße in << mm >>
Maße und Toleranzen für Messläufe
siehe Anhang CR3.

PATRONE MAXI**Längen**

L1	=	28.20
L2	=	29.90
L3 ¹⁾	=	32.80
L4	=	
L5	=	
L6	=	

Hülsenboden

R ¹⁾	=	1.52
R1	=	13.00
R3	=	
E	=	
E1	=	
e min	=	
δ	=	
f	=	0.40
β	=	35°

Pulverkammer

P1	=	12.19
P2 *	=	11.95

Schulterkonus

α *	=	31°12'
S	=	49.60
r1 min	=	1.80
r2	=	1.80

Hülsenhals

H1	=	11.00
H2 ¹⁾	=	11.00

Volumen [cm³]

VC	=	
Va 1	=	1.10
Va 2	=	0.80

Drücke (Energien)**Mech. elektr. Wandler [Va1]**

Pmax	=	3500 bar
PK	=	4025 bar
PE	=	4550 bar

Mech. elektr. Wandler [Va2]

Pmax	=	4100 bar
PK	=	4715 bar
PE	=	5330 bar
M	=	

Verschiedene Daten

Fe	=	0.30
delta L	=	

PATRONENLAGER MINI**Längen**

L1	=	28.20
L2	=	31.71
L3 ¹⁾	=	32.80

Stoßboden

R ¹⁾	=	1.52
R1	=	13.11
R2	=	
R3	=	
r	=	

Pulverkammer

E	=	
P1	=	12.37
P2 *	=	12.19

Schulterkonus

α *	=	16°03'
S	=	71.43
r1 max	=	
r2	=	

Hülsenhals

H1	=	11.20
H2 ¹⁾	=	11.20

Geschossübergang

G1 *	=	11.20
G	=	
α1	=	
h	=	
s	=	
i	=	
w	=	

Lauf

F *	=	11.20
Z	=	11.20

Volumen [cm³]

V(ET)	=	
V(T)	=	

Bemerkungen: 1) Kontrolle aus Sicherheitsgründen
* Grundmaße