

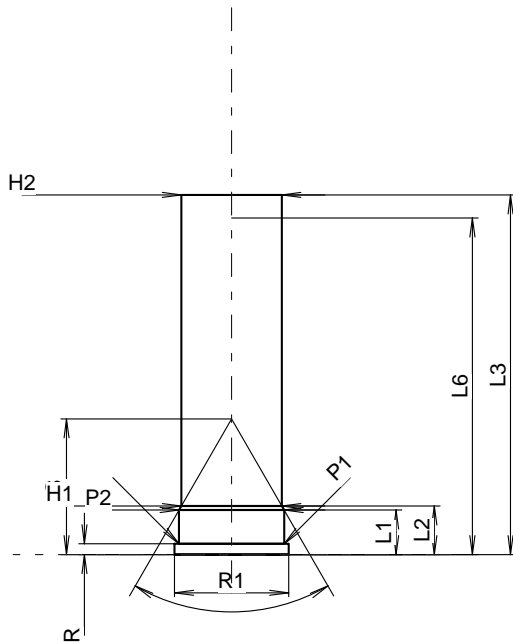
**C.I.P.****8 Gauge Industriel**

TAB. VI

Datum 84-06-14

Revision 15-05-19

Ursprungsland: US

**PATRONE MAXI****Längen**

L1	=	10.29
L2	=	11.20
L3 <sup>1)</sup>	=	82.80
L4	=	
L5	=	
L6	=	77.47

**Hülsenboden**

R <sup>1)</sup>	=	2.54	-0.18
R1	=	26.29	
R3	=		
E	=		
E1	=		
e min	=		
δ	=		
f	=		
β	=		

**Pulverkammer**

P1	=	24.21
P2 *	=	24.21

**Schulterkonus**

α *	=	60°
S *	=	31.26
r1 min	=	
r2	=	

**Hülsenhals**

H1 *	=	23.16
H2 <sup>1)</sup>	=	23.16

**Volumen [cm<sup>3</sup>]**

VC =

Va 1 =

Va 2 =

**Drücke (Energien)****Mech. elektr. Wandler [Va1]**

Pmax	=	2200 bar
PK	=	2530 bar
PE	=	2860 bar
M	=	17.00

**Verschiedene Daten**

Fe	=	
delta L	=	

**PATRONENLAGER MINI****Längen**

L1	=	9.91
L2	=	10.53
L3 <sup>1)</sup>	=	82.55

**Stoßboden**

R <sup>1)</sup>	=	2.53
R1	=	26.31
R2	=	
R3	=	
r	=	

**Pulverkammer**

E	=	
P1	=	24.26
P2 *	=	24.26

**Schulterkonus**

α <sup>1)</sup> *	=	60°
S *	=	30.92
r1 max	=	
r2	=	

**Hülsenhals**

H1 *	=	23.55
H2 <sup>1)</sup>	=	23.19

**Geschossübergang**

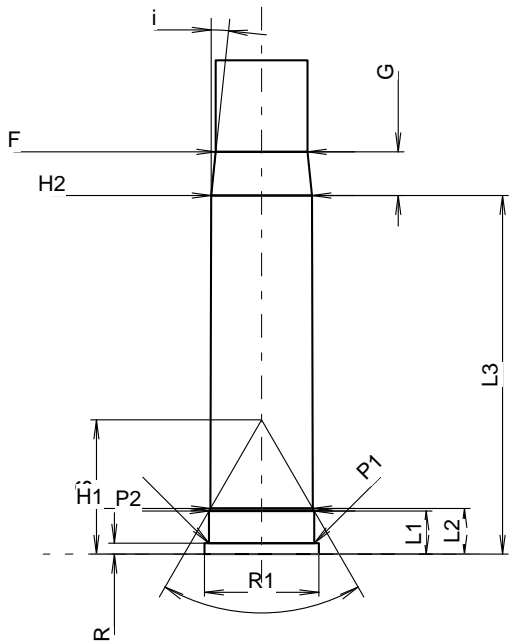
G1 <sup>1)</sup> *	=	
G <sup>1)</sup>	=	10.03
α1	=	12°
h	=	
s *	=	
i <sup>1)</sup> *	=	5°
w	=	

**Lauf**

F <sup>1)</sup> *	=	21.08
Z <sup>1)</sup>	=	21.08

**Volumen [cm<sup>3</sup>]**

V(ET)	=	
V(T)	=	



Maßstab 1:1.74

Maße in << mm >>  
Maße und Toleranzen für Messläufe  
siehe Anhang CR 3.

Bemerkungen: 1) Kontrolle aus Sicherheitsgründen  
\* Grundmaße