

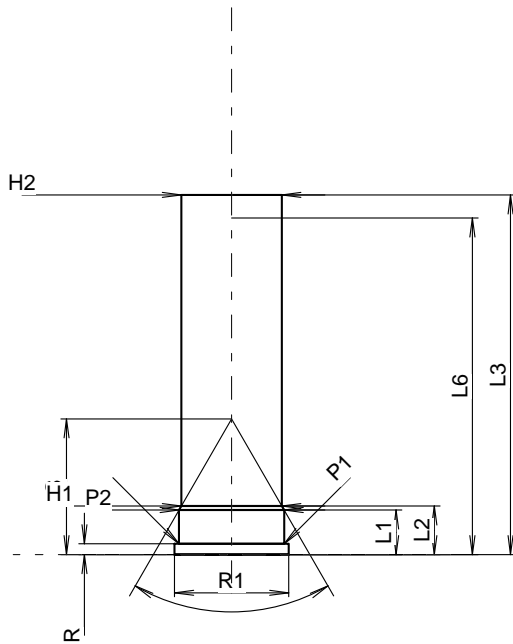
**C.I.P.****8 Gauge Industriel**

Country of Origin: US

TAB. VI

Date 84-06-14

Revision 15-05-19

**CARTRIDGE MAXI****Lengths**

L1	=	10.29
L2	=	11.20
L3 <sup>1)</sup>	=	82.80
L4	=	
L5	=	
L6	=	77.47

**Case Head**

R <sup>1)</sup>	=	2.54	-0.18
R1	=	26.29	
R3	=		
E	=		
E1	=		
e min	=		
δ	=		
f	=		
β	=		

**Powder Chamber**

P1	=	24.21
P2 *	=	24.21

**Junction Cone**

α *	=	60°
S *	=	31.26
r1 min	=	
r2	=	

**Collar**

H1 *	=	23.16
H2 <sup>1)</sup>	=	23.16

**Volumes [cm<sup>3</sup>]**

VC	=	
Va 1	=	
Va 2	=	

**Pressures (Energies)****Method Transducer [Va1]**

Pmax	=	2200 bar
PK	=	2530 bar
PE	=	2860 bar
M	=	17.00

**Miscellaneous Dimensions**

Fe	=	
delta L	=	

**CHAMBER MINI****Lengths**

L1	=	9.91
L2	=	10.53
L3 <sup>1)</sup>	=	82.55

**Breech**

R <sup>1)</sup>	=	2.53
R1	=	26.31
R2	=	
R3	=	
r	=	

**Powder Chamber**

E	=	
P1	=	24.26
P2 *	=	24.26

**Junction Cone**

α <sup>1)</sup> *	=	60°
S *	=	30.92
r1 max	=	
r2	=	

**Collar**

H1 *	=	23.55
H2 <sup>1)</sup>	=	23.19

**Commencement of Rifling**

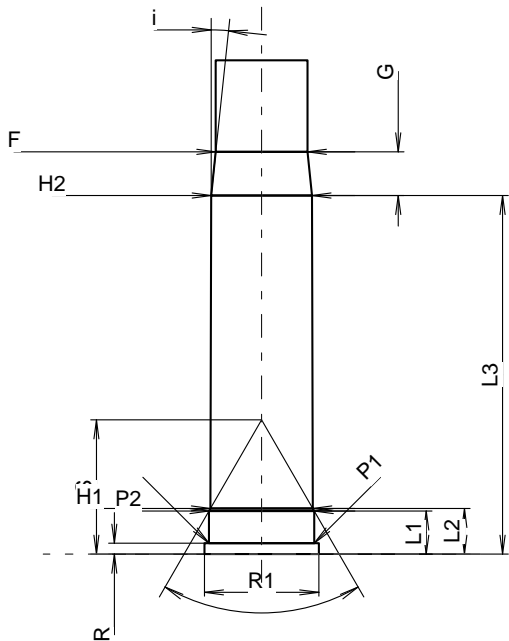
G1 <sup>1)</sup> *	=	
G <sup>1)</sup>	=	10.03
α1	=	12°
h	=	
s *	=	
i <sup>1)</sup> *	=	5°
w	=	

**Barrel**

F <sup>1)</sup> *	=	21.08
Z <sup>1)</sup>	=	21.08

**Volumes [cm<sup>3</sup>]**

V(ET)	=	
V(T)	=	



Scale 1:1.74

Dimensions in << mm >>  
 Dimensions and Tolerances for Proof Barrels  
 see Appendix CR 3.

Notes: 1) Check for safety reasons  
 \* Basic dimensions