

**C.I.P.****9 x 17**

TAB.

VI

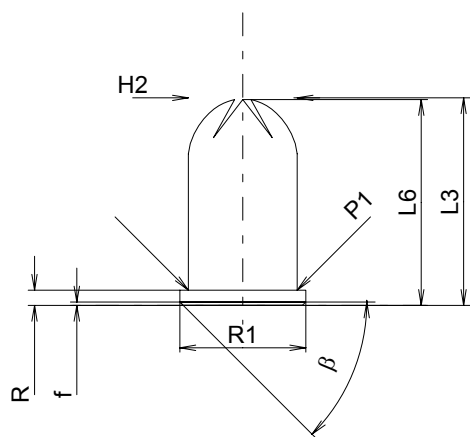
Date

84-06-14

Revision

94-05-31

Country of Origin: DE

**CARTRIDGE MAXI****Lengths**

L1	=	
L2	=	
L3 <sup>1)</sup>	=	18.30
L4	=	
L5	=	
L6	=	18.15

**Case Head**

R	=	1.35
R1	=	11.10
R3	=	
E	=	
E1	=	
e min	=	
δ	=	
f	=	0.30
β	=	45°

**Powder Chamber**

P1	=	9.58
P2	=	

**Junction Cone**

α	=	
S	=	
r1 min	=	
r2	=	

**Collar**

H1	=	
H2 <sup>1)</sup>	=	9.58

**Volumes [cm<sup>3</sup>]**

VC	=	1.08
Va 1	=	0.40
Va 2	=	

**Pressures (Energies)****Method Transducer [Va1]**

Pmax	=	1450 bar
PK	=	1668 bar
PE	=	1885 bar
M	=	

**Miscellaneous Dimensions**

Fe	=	
delta L	=	

**CHAMBER MINI****Lengths**

L1	=	
L2	=	
L3 <sup>1)</sup>	=	18.50

**Breech**

R <sup>1)</sup>	=	1.30
R1	=	11.20
R2	=	
R3	=	
r	=	

**Powder Chamber**

E	=	
P1	=	9.60
P2	=	

**Junction Cone**

α	=	
S	=	
r1 max	=	
r2	=	

**Collar**

H1	=	
H2	=	9.60

**Commencement of Rifling**

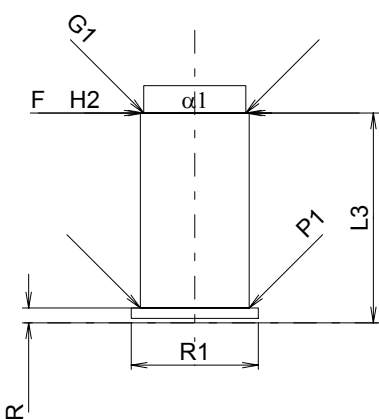
G1 <sup>*</sup>	=	9.00
G	=	
α1	=	180°
h	=	
s	=	
i	=	
w	=	

**Barrel**

F <sup>*</sup>	=	9.00
Z	=	9.00

**Volumes [cm<sup>3</sup>]**

V(ET)	=	1.37
V(T)	=	



Scale 1.5:1

Dimensions in << mm >>  
Dimensions and Tolerances for Proof Barrels  
see Appendix CR 3.

Notes: 1) Check for safety reasons  
\* Basic dimensions