

C.I.P.**9 x 20**

TAB.

VI

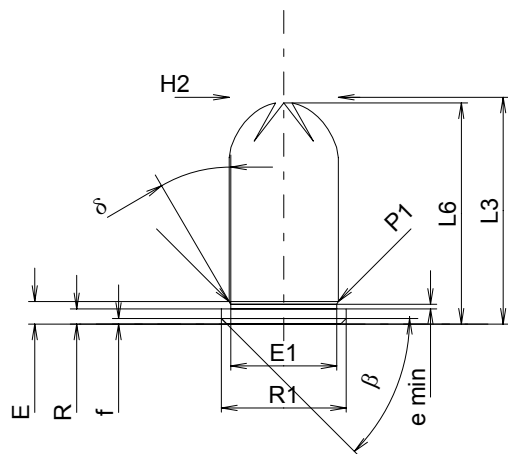
Date

00-10-06

Revision

02-05-15

Country of Origin: CZ

**CARTRIDGE MAXI****Lengths**

L1	=	
L2	=	
L3 ¹⁾	=	20.00
L4	=	
L5	=	
L6	=	19.50

Case Head

R	=	1.35
R1	=	11.00
R3	=	
E	=	1.99
E1	=	9.35
e min	=	0.40
delta	=	30°
f	=	0.50
beta	=	45°

Powder Chamber

P1	=	9.63
P2	=	

Junction Cone

alpha	=	
S	=	
r1 min	=	
r2	=	

Collar

H1	=	
H2 ¹⁾	=	9.63

Volumes [cm³]

VC	=	
Va 1	=	0.40
Va 2	=	

Pressures (Energies)**Method Transducer [Va1]**

Pmax	=	1000 bar
PK	=	1150 bar
PE	=	1300 bar
M	=	

Miscellaneous Dimensions

Fe	=	
delta L	=	

CHAMBER MINI**Lengths**

L1	=	
L2	=	
L3 ¹⁾	=	20.50

Breech

R ¹⁾	=	1.38
R1	=	11.08
R2	=	
R3	=	
r	=	

Powder Chamber

E	=	
P1	=	9.64
P2	=	

Junction Cone

alpha	=	
S	=	
r1 max	=	
r2	=	

Collar

H1	=	
H2	=	9.64

Commencement of Rifling

G1*	=	10.20
G	=	
alpha1	=	180°
h	=	
s	=	
i	=	
w	=	

Barrel

F*	=	10.20
Z	=	10.20

Volumes [cm³]

V(ET)	=	
V(T)	=	

Scale 1.5:1

Dimensions in << mm >>
 Dimensions and Tolerances for Proof Barrels
 see Appendix CR 3.

Notes: 1) Check for safety reasons
 * Basic dimensions