

C.I.P.**5,7/16**

TAB.

VI

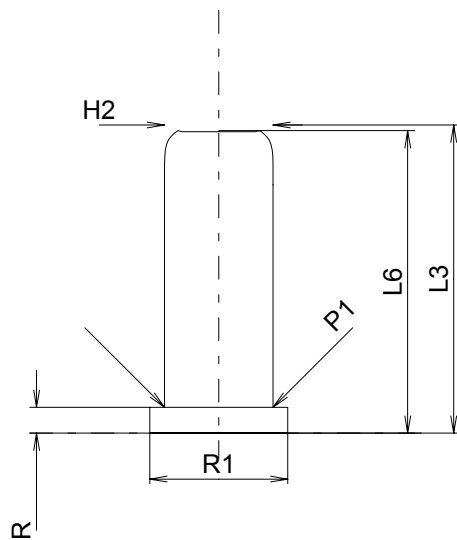
Date

84-06-14

Revision

90-06-13

Country of Origin: FR

**CARTRIDGE MAXI****Lengths**

L1	=	
L2	=	
L3 ¹⁾	=	16.30
L4	=	
L5	=	
L6	=	16.00

Case Head

R	=	1.36
R1	=	7.30
R3	=	
E	=	
E1	=	
e min	=	
δ	=	
f	=	
β	=	

Powder Chamber

P1	=	5.74
P2	=	

Junction Cone

α	=	
S	=	
r1 min	=	
r2	=	

Collar

H1	=	
H2 ¹⁾	=	5.74

Volumes [cm³]

VC	=	0.43
Va 1	=	0.16
Va 2	=	0.80

Pressures (Energies)**Method Transducer [Va1]**

Pmax	=	3200 bar
PK	=	3680 bar
PE	=	4160 bar

Method Transducer [Va2]

Pmax	=	1500 bar
PK	=	1725 bar
PE	=	1950 bar
M	=	

Miscellaneous Dimensions

Fe	=	
delta L	=	

CHAMBER MINI**Lengths**

L1	=	
L2	=	
L3 ¹⁾	=	17.00

Breech

R ¹⁾	=	1.36
R1	=	7.30
R2	=	
R3	=	
r	=	

Powder Chamber

E	=	
P1	=	5.80
P2	=	

Junction Cone

α	=	
S	=	
r1 max	=	
r2	=	

Collar

H1	=	
H2	=	5.76

Commencement of Rifling

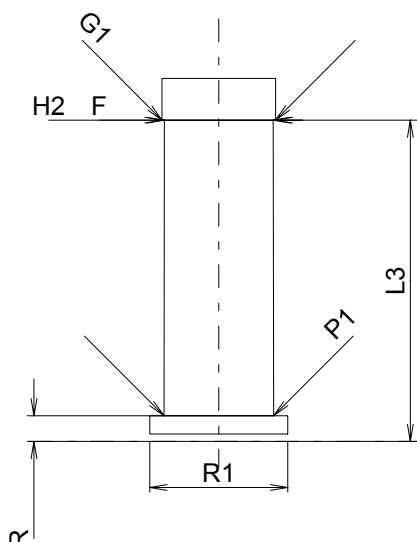
G1*	=	6.00
G	=	
α1	=	180°
h	=	
s	=	
i	=	
w	=	

Barrel

F*	=	6.00
Z	=	6.00

Volumes [cm³]

V(ET)	=	0.47
V(T)	=	



Scale 2.5:1

Dimensions in << mm >>
Dimensions and Tolerances for Proof Barrels
see Appendix CR 3.

Notes: 1) Check for safety reasons
* Basic dimensions