

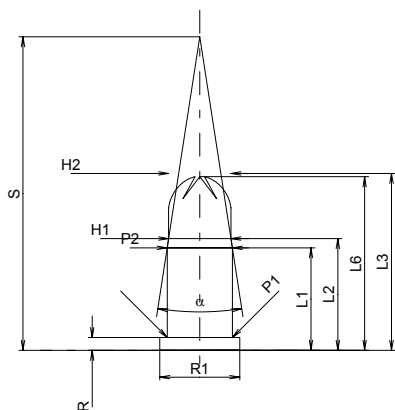
C.I.P.**22 NC (5,5/16)**

TAB. VI

Date 84-06-14

Pays d'origine: US

Révision 96-06-06

**CARTOUCHE MAXI****Longueurs**

L1	=	9.04
L2	=	9.85
L3 ¹⁾	=	15.60
L4	=	
L5	=	
L6	=	15.30

Culot

R	=	1.12
R1	=	7.06
R3	=	
E	=	
E1	=	
e min	=	
delta	=	
f	=	
beta	=	

Chambre à poudre

P1	=	5.74
P2*	=	5.74

Cône de raccordement

alpha*	=	17°32'44"
S*	=	27.64
r1 min	=	
r2	=	

Collet

H1*	=	5.49
H2 ¹⁾	=	5.49

Volumes [cm³]

VC	=	0.39
Va 1	=	0.16
Va 2	=	0.80

Pressions (Énergies)**Méthode transducteur [Va1]**

Pmax	=	2800 bar
PK	=	3220 bar
PE	=	3640 bar

Méthode transducteur [Va2]

Pmax	=	1300 bar
PK	=	1495 bar
PE	=	1690 bar
M	=	

Autres indications

Fe	=	
delta L	=	

CHAMBRE MINI**Longueurs**

L1	=	
L2	=	
L3 ¹⁾	=	16.00

Cuvette

R ¹⁾	=	1.10
R1	=	7.10
R2	=	
R3	=	
r	=	

Chambre à poudre

E	=	
P1	=	5.80
P2	=	

Cône de raccordement

alpha	=	
S	=	
r1 max	=	
r2	=	

Collet

H1	=	
H2	=	5.76

Prise de rayures

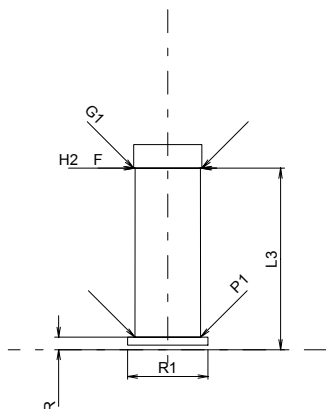
G1*	=	6.00
G	=	
alpha1*	=	180°
h	=	
s	=	
i	=	
w	=	

Canon

F*	=	6.00
Z	=	6.00

Volumes [cm³]

V(ET)	=	0.45
V(T)	=	



Échelle 1.5:1

Dimensions en << mm >>
Dimensions et tolérances pour les canons
d'épreuve: Voyez Annexe CR 3.

Notes: 1) A' contrôler pour la sécurité
* Dimensions de base