

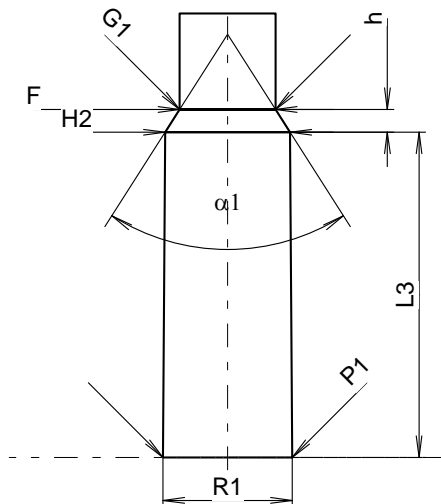
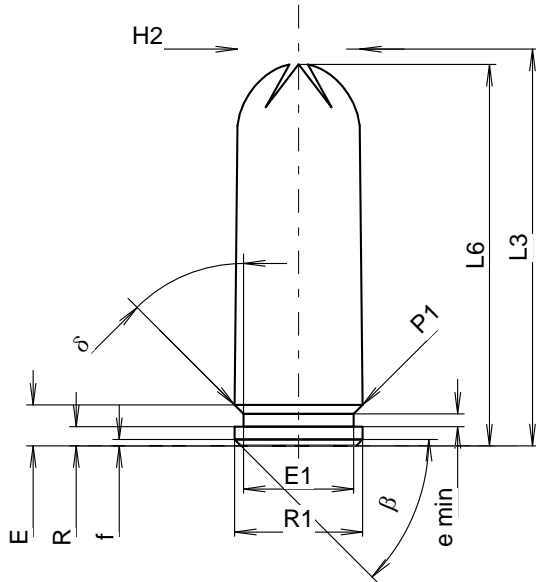
C.I.P.**10 x 31**

TAB. X

Date 16-10-18

Country of Origin: RU

Revision



Scale 1.69:1

CARTRIDGE MAXI**Lengths**

L1	=		
L2	=		
L3 ¹⁾	=	31.00	-0.25
L4	=		
L5	=		
L6 ¹⁾	=	29.80	

Case Head

R	=	1.50	
R1	=	10.00	
R3	=		
E	=	3.20	
E1	=	8.60	
e min	=	1.00	
delta	=	45°	
f	=	0.50	
beta	=	45°	

Powder Chamber

P1	=	10.00	
P2	=		

Junction Cone

alpha	=		
S	=		
r1 min	=		
r2	=		

Collar

H1	=		
H2 ¹⁾	=	9.55	

Projectile

G1	=		
G2	=		
F	=		
L3+G ¹⁾	=		

Pressures (Energies)**Method Transducer**

Pmax	=	1800 bar	
PK	=	2070 bar	
PE	=	2340 bar	
M	=	10.50	

Miscellaneous Dimensions

Fe ¹⁾	=		
delta L	=		

CHAMBER MINI**Lengths**

L1	=		
L2	=		
L3 ¹⁾	=	25.41	

Breech

R	=		
R1	=	10.10	
R2	=		
R3	=		
r	=		

Powder Chamber

E	=		
P1 ¹⁾	=	10.10	
P2	=		

Junction Cone

alpha	=		
S	=		
r1 max	=		
r2	=		

Collar

H1	=		
H2 ¹⁾	=	9.76	

Commencement of Rifling

G1 ²⁾ *	=	7.50	
G	=		
alpha1	=	65°	
h*	=	1.77	
s	=		
i	=		
w	=		

Barrel

F ²⁾ *	=	7.50	
Z	=		

Grooves

b	=		
N	=		
u	=		
Q	=	44.18	mm ²

Dimensions in << mm >>
 Dimensions and Tolerances for Proof Barrels
 see Appendix CR5.

Notes: 1) Check for safety reasons
 2) Valid only for Proof barrels
 * Basic dimensions