

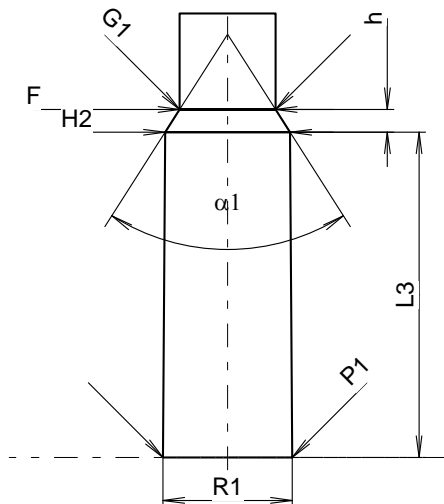
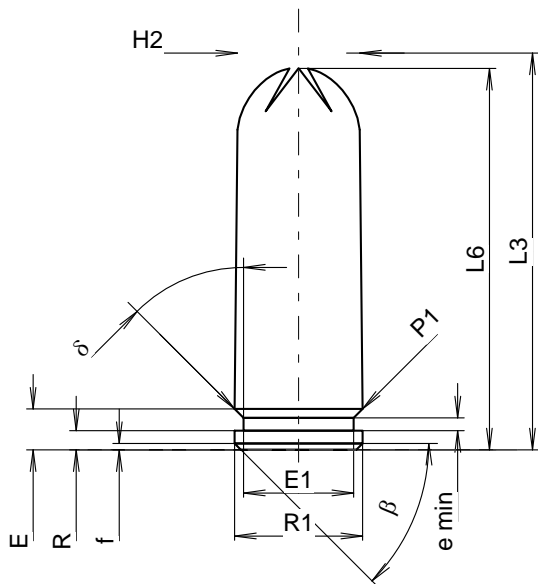
C.I.P.**10 x 31**

TAB. X

Date 16-10-18

Pays d'origine: RU

Révision



Échelle 1.69:1

CARTOUCHE MAXI**Longueurs**

L1	=		
L2	=		
L3 ¹⁾	=	31.00	-0.25
L4	=		
L5	=		
L6 ¹⁾	=	29.80	

Culot

R	=	1.50	
R1	=	10.00	
R3	=		
E	=	3.20	
E1	=	8.60	
e min	=	1.00	
delta	=	45°	
f	=	0.50	
beta	=	45°	

Chambre à poudre

P1	=	10.00	
P2	=		

Cône de raccordement

alpha	=		
S	=		
r1 min	=		
r2	=		

Collet

H1	=		
H2 ¹⁾	=	9.55	

Projectile

G1	=		
G2	=		
F	=		
L3+G ¹⁾	=		

Pressions (Énergies)**Méthode transducteur**

Pmax	=	1800 bar	
PK	=	2070 bar	
PE	=	2340 bar	
M	=	10.50	

Autres indications

Fe ¹⁾	=		
delta L	=		

CHAMBRE MINI**Longueurs**

L1	=		
L2	=		
L3 ¹⁾	=	25.41	

Cuvette

R	=		
R1	=	10.10	
R2	=		
R3	=		
r	=		

Chambre à poudre

E	=		
P1 ¹⁾	=	10.10	
P2	=		

Cône de raccordement

alpha	=		
S	=		
r1 max	=		
r2	=		

Collet

H1	=		
H2 ¹⁾	=	9.76	

Prise de rayures

G1 ²⁾ *	=	7.50	
G	=		
alpha1	=	65°	
h*	=	1.77	
s	=		
i	=		
w	=		

Canon

F ²⁾ *	=	7.50	
Z	=		

Rayures

b	=		
N	=		
u	=		
Q	=	44.18	mm ²

Dimensions en << mm >>
Dimensions et tolérances pour les canons
d'épreuve: Voyez Annexe CR5.

Notes: 1) A' contrôler pour la sécurité
2) Valable uniquement pour les canons d'épreuve
* Dimensions de base