

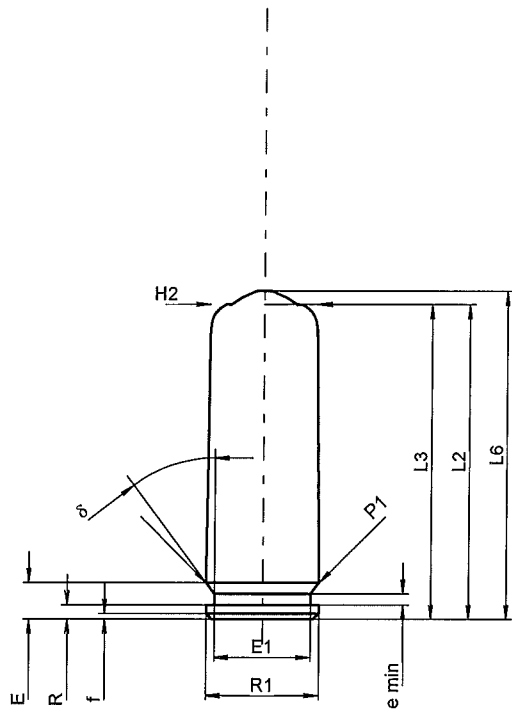
**C.I.P.****10 x 28**

TAB. X

Date 12-05-30

Pays d'origine: RU

Révision

**CARTOUCHE MAXI****Longueurs**

L1	=	
L2	=	27.80
L3 1)	=	27.80
L4	=	
L5	=	
L6 1)	=	29.00

**Culot**

R	=	1.25
R1	=	10.00
R3	=	
E	=	3.21
E1	=	8.55
e min	=	1.00
delta	=	37°
f	=	0.50
beta	=	

**Chambre à poudre**

P1	=	10.00
P2	=	

**Cône de raccordement**

alpha	=	
S	=	
r1 min	=	
r2	=	

**Collet**

H1	=	
H2 1)	=	9.55

**Projectile**

G1	=	
G2	=	
F	=	
L3+G	=	42.39

**Pressions (Énergies)****Méthode transducteur**

Pmax	=	1800 bar
PK	=	2070 bar
PE	=	2340 bar
M	=	10.50

**Autres indications**

Fe	=	
delta L	=	

**CHAMBRE MINI****Longueurs**

L1	=	
L2	=	
L3 1)	=	25.41

**Cuvette**

R	=	
R1	=	10.10
R2	=	
R3	=	
r	=	

**Chambre à poudre**

E	=	
P1 1)	=	10.10
P2	=	

**Cône de raccordement**

alpha	=	
S	=	
r1 max	=	
r2	=	

**Collet**

H1	=	
H2 1)	=	9.76

**Prise de rayures**

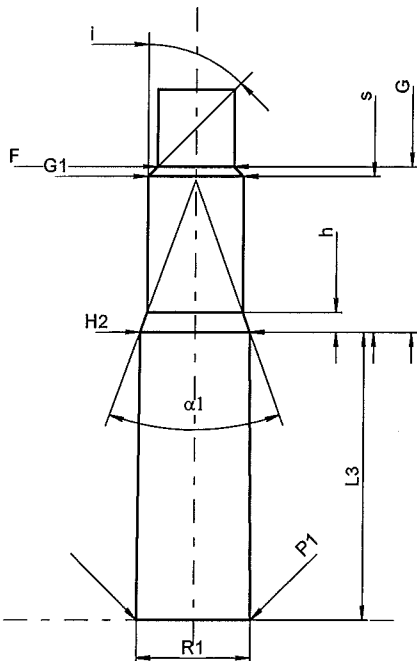
G1	=	8.50
G	=	14.59
alpha1	=	40°
h	=	1.73
s	=	13.74
i	=	45°
w	=	

**Canon**

F	=	6.80
Z	=	

**Rayures**

b	=	
N	=	
u	=	
Q	=	36.32 mm <sup>2</sup>



Échelle 1.5:1

Dimensions en << mm >>  
Dimensions et tolérances pour les canons  
d'épreuve: Voyez Annexe CR 1.

Notes: 1) A' contrôler pour la sécurité