

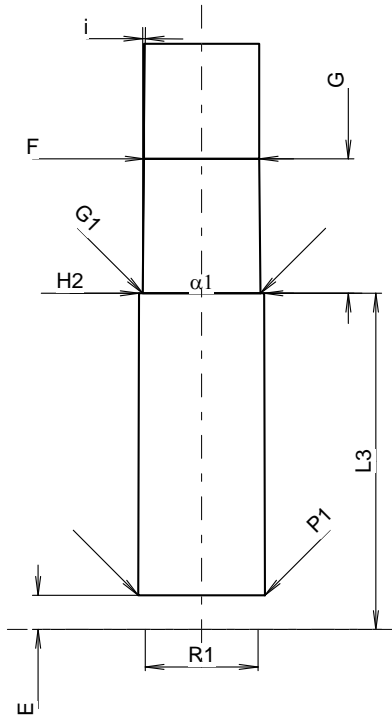
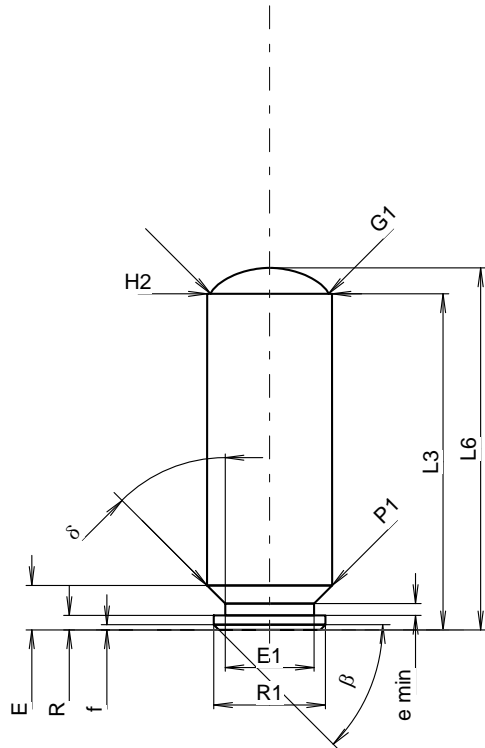
C.I.P.**11,5 FK**

TAB. X

Datum 21-04-07

Ursprungsland: CZ

Revision



Maßstab 1.37:1

Maße in << mm >>
Maße und Toleranzen für Messläufe
siehe Anhang CR1.

PATRONE MAXI**Längen**

L1	=		
L2	=		
L3 ¹⁾	=	32.50	-0.25
L4	=		
L5	=		
L6	=	35.00	

Hülsenboden

R	=	1.40	
R1	=	10.80	
R3	=		
E	=	4.30	
E1	=	8.60	
e min	=	1.15	
delta	=	45°	
f	=	0.50	
beta	=	45°	

Pulverkammer

P1	=	12.10	
P2	=		

Schulterkonus

alpha	=		
S	=		
r1 min	=		
r2	=		

Hülsenhals

H1	=		
H2 ¹⁾	=	12.07	

Geschoss

G1 ¹⁾	=	11.40	
G2	=		
F	=		
L3+G	=	45.50	

Drücke (Energien)**Mech. elektr. Wandler**

Pmax	=	2550 bar	
PK	=	2933 bar	
PE	=	3315 bar	
M	=	17.50	

Verschiedene Daten

Fe ⁶⁾	=	0.30	
delta L	=		

PATRONENLAGER MINI**Längen**

L1	=		
L2	=		
L3 ¹⁾	=	32.50	

Stoßboden

R	=		
R1	=	10.90	
R2	=		
R3	=		
r	=		

Pulverkammer

E	=	3.30	
P1 ¹⁾	=	12.25	
P2	=		

Schulterkonus

alpha	=		
S	=		
r1 max	=		
r2	=		

Hülsenhals

H1	=		
H2 ¹⁾	=	12.10	

Geschossübergang

G1 ¹⁾ *	=	11.40	
G ¹⁾	=	13.00	
alpha1	=	180°	
h	=		
s	=		
i ¹⁾ *	=	0°35'41"	
w	=		

Lauf

F	=	11.13	
Z	=	11.43	

Züge

b	=	3.73	
N	=	6	
u	=		
Q	=	100.71	mm ²

Bemerkungen: 1) Kontrolle aus Sicherheitsgründen
6) Verschlussabstand an Hülsenmund
* Grundmaße