

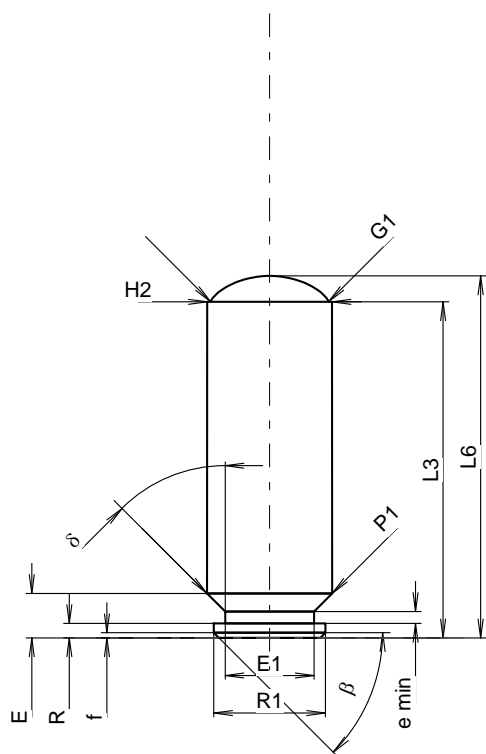
**C.I.P.****11,5 FK**

TAB. X

Date 21-04-07

Country of Origin: CZ

Revision

**CARTRIDGE MAXI****Lengths**

L1	=		
L2	=		
L3 <sup>1)</sup>	=	32.50	-0.25
L4	=		
L5	=		
L6	=	35.00	

**Case Head**

R	=	1.40	
R1	=	10.80	
R3	=		
E	=	4.30	
E1	=	8.60	
e min	=	1.15	
$\delta$	=	45°	
f	=	0.50	
$\beta$	=	45°	

**Powder Chamber**

P1	=	12.10	
P2	=		

**Junction Cone**

$\alpha$	=		
S	=		
r1 min	=		
r2	=		

**Collar**

H1	=		
H2 <sup>1)</sup>	=	12.07	

**Projectile**

G1 <sup>1)</sup>	=	11.40	
G2	=		
F	=		
L3+G	=	45.50	

**Pressures (Energies)****Method Transducer**

Pmax	=	2550 bar	
PK	=	2933 bar	
PE	=	3315 bar	
M	=	17.50	

**Miscellaneous Dimensions**

Fe <sup>6)</sup>	=	0.30	
delta L	=		

**CHAMBER MINI****Lengths**

L1	=		
L2	=		
L3 <sup>1)</sup>	=	32.50	

**Breech**

R	=		
R1	=	10.90	
R2	=		
R3	=		
r	=		

**Powder Chamber**

E	=	3.30	
P1 <sup>1)</sup>	=	12.25	
P2	=		

**Junction Cone**

$\alpha$	=		
S	=		
r1 max	=		
r2	=		

**Collar**

H1	=		
H2 <sup>1)</sup>	=	12.10	

**Commencement of Rifling**

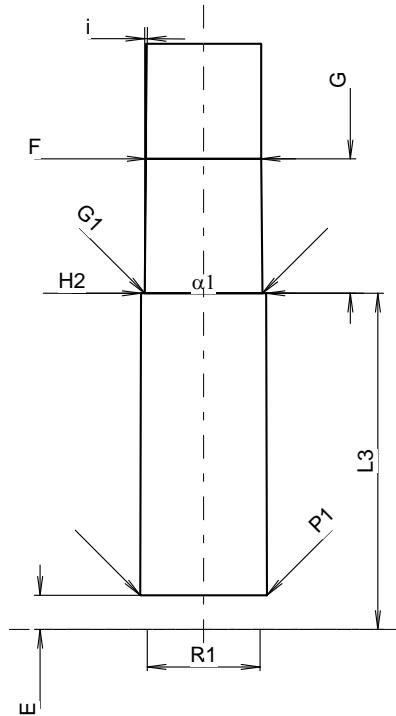
G1 <sup>1)</sup> *	=	11.40	
G <sup>1)</sup>	=	13.00	
$\alpha 1$	=	180°	
h	=		
s	=		
i <sup>1)</sup> *	=	0°35'41"	
w	=		

**Barrel**

F	=	11.13	
Z	=	11.43	

**Grooves**

b	=	3.73	
N	=	6	
u	=		
Q	=	100.71	mm <sup>2</sup>



Scale 1.37:1

Dimensions in << mm >>  
 Dimensions and Tolerances for Proof Barrels  
 see Appendix CR1.

Notes: 1) Check for safety reasons  
 6) Headspace on Case Mouth  
 \* Basic dimensions