

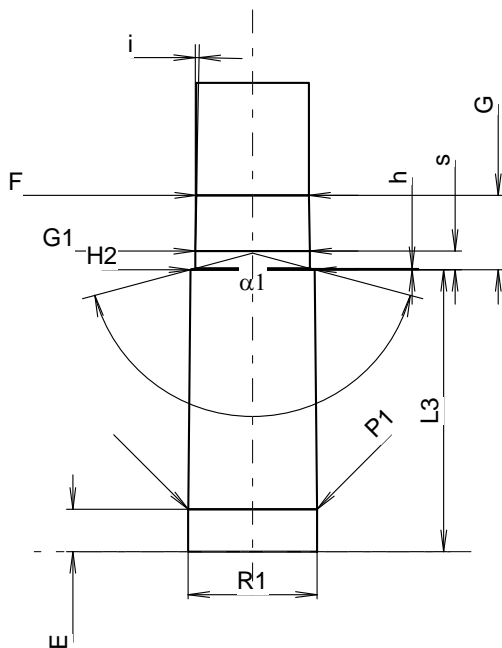
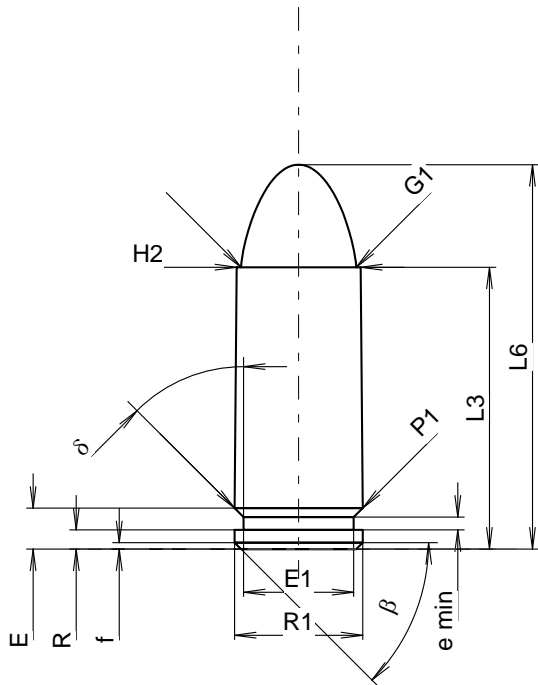
C.I.P.**345 TK**

TAB. X

Datum 19-05-22

Revision 20-11-10

Ursprungsland: RU



Maßstab 1.7:1

Maße in << mm >>
Maße und Toleranzen für Messläufe
siehe Anhang CR1.

PATRONE MAXI**Längen**

L1	=		
L2	=		
L3 ¹⁾	=	22.00	-0.25
L4	=		
L5	=		
L6	=	30.00	

Hülsenboden

R	=	1.50	
R1	=	10.00	
R3	=		
E	=	3.20	
E1	=	8.60	
e min	=	1.00	
delta	=	45°	
f	=	0.50	
beta	=	45°	

Pulverkammer

P1	=	10.00	
P2	=		

Schulterkonus

alpha	=		
S	=		
r1 min	=		
r2	=		

Hülsenhals

H1	=		
H2 ¹⁾	=	9.67	

Geschoss

G1 ^{1)*}	=	9.00	
G2	=		
F	=		
L3+G ¹⁾	=	27.80	

Drücke (Energien)**Mech. elektr. Wandler**

Pmax	=	2800 bar	
PK	=	3220 bar	
PE	=	3640 bar	
M	=	12.50	

Verschiedene Daten

Fe ⁶⁾	=	0.30	
delta L	=		

PATRONELAGER MINI**Längen**

L1	=		
L2	=		
L3 ¹⁾	=	22.00	

Stoßboden

R	=		
R1	=	10.08	
R2	=		
R3	=		
r	=		

Pulverkammer

E	=	3.30	
P1 ¹⁾	=	10.05	
P2	=		

Schulterkonus

alpha	=		
S	=		
r1 max	=		
r2	=		

Hülsenhals

H1	=		
H2 ¹⁾	=	9.69	

Geschossübergang

G1 ^{1)*}	=	8.95	
G ¹⁾	=	5.80	
alpha1	=	150°	
h	=	0.10	
s *	=	1.45	
i ^{1)*}	=	1°07'10"	
w	=		

Lauf

F ^{1)*}	=	8.78	
Z ¹⁾	=	8.78	

Züge

b	=		
N	=		
u	=		
Q	=	60.55	mm ²

Bemerkungen: 1) Kontrolle aus Sicherheitsgründen
6) Verschlussabstand an Hülsenmund
* Grundmaße