

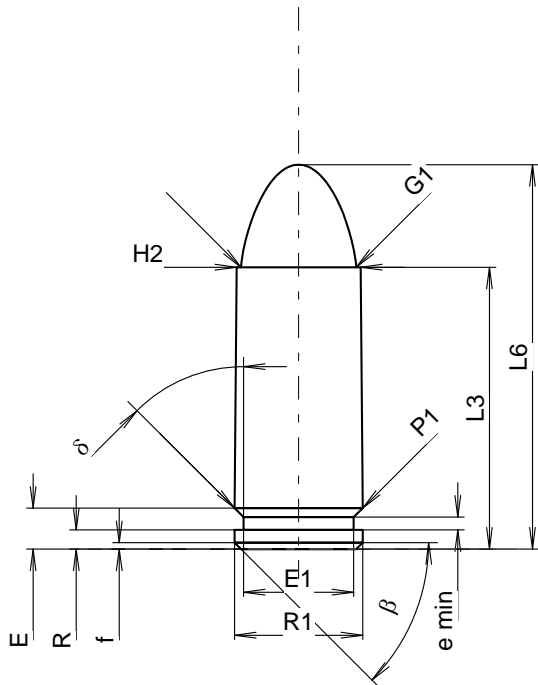
**C.I.P.****345 TK**

TAB. X

Date 19-05-22

Country of Origin: RU

Revision 20-11-10

**CARTRIDGE MAXI****Lengths**

L1	=		
L2	=		
L3 <sup>1)</sup>	=	22.00	-0.25
L4	=		
L5	=		
L6	=	30.00	

**Case Head**

R	=	1.50	
R1	=	10.00	
R3	=		
E	=	3.20	
E1	=	8.60	
e min	=	1.00	
delta	=	45°	
f	=	0.50	
beta	=	45°	

**Powder Chamber**

P1	=	10.00	
P2	=		

**Junction Cone**

alpha	=		
S	=		
r1 min	=		
r2	=		

**Collar**

H1	=		
H2 <sup>1)</sup>	=	9.67	

**Projectile**

G1 <sup>1)*</sup>	=	9.00	
G2	=		
F	=		
L3+G <sup>1)</sup>	=	27.80	

**Pressures (Energies)****Method Transducer**

Pmax	=	2800 bar	
PK	=	3220 bar	
PE	=	3640 bar	
M	=	12.50	

**Miscellaneous Dimensions**

Fe <sup>6)</sup>	=	0.30	
delta L	=		

**CHAMBER MINI****Lengths**

L1	=		
L2	=		
L3 <sup>1)</sup>	=	22.00	

**Breech**

R	=		
R1	=	10.08	
R2	=		
R3	=		
r	=		

**Powder Chamber**

E	=	3.30	
P1 <sup>1)</sup>	=	10.05	
P2	=		

**Junction Cone**

alpha	=		
S	=		
r1 max	=		
r2	=		

**Collar**

H1	=		
H2 <sup>1)</sup>	=	9.69	

**Commencement of Rifling**

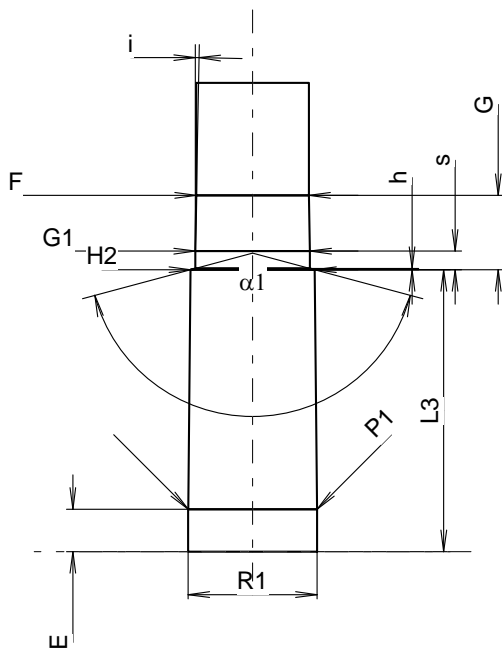
G1 <sup>1)*</sup>	=	8.95	
G <sup>1)</sup>	=	5.80	
alpha1	=	150°	
h	=	0.10	
s *	=	1.45	
i <sup>1)*</sup>	=	1°07'10"	
w	=		

**Barrel**

F <sup>1)*</sup>	=	8.78	
Z <sup>1)</sup>	=	8.78	

**Grooves**

b	=		
N	=		
u	=		
Q	=	60.55	mm <sup>2</sup>



Scale 1.7:1

Dimensions in << mm >>  
Dimensions and Tolerances for Proof Barrels  
see Appendix CR1.

Notes: 1) Check for safety reasons  
6) Headspace on Case Mouth  
\* Basic dimensions