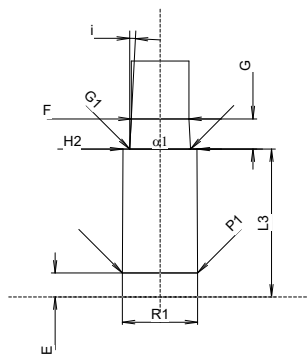
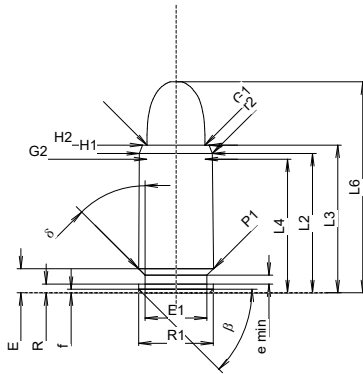


C.I.P.**9 mm MT-X****TAB. X****Datum 22-04-26**

Ursprungsland: SI

Revision**PATRONE MAXI****Längen**

L1	=		
L2	=	18.45	
L3 ¹⁾	=	19.55	-0.20
L4	=	17.70	
L5	=		
L6	=	27.90	

Hülsenboden

R	=	1.19	-0.15
R1	=	9.86	-0.16
R3	=		
E	=	3.20	
E1	=	8.20	-0.16
e min	=	1.15	
delta	=	45°	
f	=	0.50	
beta	=	45°	

Pulverkammer

P1	=	9.92	-0.16
P2	=		

Schulterkonus

alpha	=		
S	=		
r1 min	=		
r2	=	3.00	

Hülsenhals

H1 *	=	9.65	-0.16
H2 ¹⁾	=	8.80	-0.16

Geschoss

G1 ¹⁾	=	7.65	
G2	=	7.75	
F	=		
L3+G ¹⁾	=	23.56	

Drücke (Energien)**Energie**

E _{max}	=	8.8 Joule	
E _K	=	9.4 Joule	
E _E	=	9.7 Joule	

Verschiedene Daten

Fe ¹⁾⁶⁾	=	0.30	
delta L	=		

PATRONENLAGER MINI**Längen**

L1	=		
L2	=		
L3 ¹⁾	=	19.55	

Stoßboden

R	=		
R1	=	9.96	
R2	=		
R3	=		
r	=		

Pulverkammer

E	=	3.18	
P1 ¹⁾	=	9.94	
P2	=		

Schulterkonus

alpha	=		
S	=		
r1 max	=		
r2	=		

Hülsenhals

H1	=		
H2 ¹⁾	=	9.82	

Geschossübergang

G1 ^{1)*}	=	8.05	
G ¹⁾	=	4.01	
alpha1 *	=	180°	
h	=		
s	=		
i ^{1)*}	=	2°59'52"	
w	=		

Lauf

F ^{1)*}	=	7.63	
Z ¹⁾	=	7.83	

Züge

b	=	2.69	
N	=	6	
u	=	250.00	
Q	=	47.37	mm ²

Maßstab 1:1

Maße in << mm >>
Maße und Toleranzen für Messläufe
siehe Anhang CR 1.

Bemerkungen: 1) Kontrolle aus Sicherheitsgründen
6) Verschlussabstand an Hülsenmund
* Grundmaße