

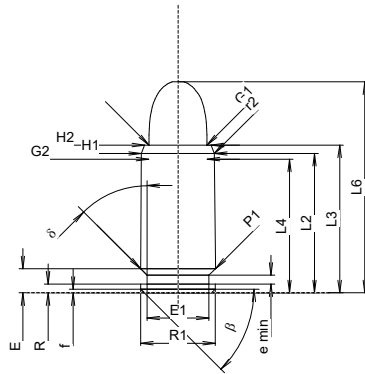
C.I.P.**9 mm MT-X**

TAB. X

Date 22-04-26

Country of Origin: SI

Revision

**CARTRIDGE MAXI****CHAMBER MINI****Lengths**

L1	=		
L2	=	18.45	
L3 ¹⁾	=	19.55	-0.20
L4	=	17.70	
L5	=		
L6	=	27.90	

Lengths

L1	=	
L2	=	
L3 ¹⁾	=	19.55

Case Head

R	=	1.19	-0.15
R1	=	9.86	-0.16
R3	=		
E	=	3.20	
E1	=	8.20	-0.16
e min	=	1.15	
delta	=	45°	
f	=	0.50	
beta	=	45°	

Breech

R	=	
R1	=	9.96
R2	=	
R3	=	
r	=	

Powder Chamber

P1	=	9.92	-0.16
P2	=		

Powder Chamber

E	=	3.18
P1 ¹⁾	=	9.94
P2	=	

Junction Cone

alpha	=	
S	=	
r1 min	=	
r2	=	3.00

Junction Cone

alpha	=	
S	=	
r1 max	=	
r2	=	

Collar

H1 *	=	9.65	-0.16
H2 ¹⁾	=	8.80	-0.16

Collar

H1	=	
H2 ¹⁾	=	9.82

Projectile

G1 ¹⁾	=	7.65	
G2	=	7.75	
F	=		
L3+G ¹⁾	=	23.56	

Commencement of Rifling

G1 ¹⁾ *	=	8.05
G ¹⁾	=	4.01
alpha1 *	=	180°
h	=	
s	=	
i ¹⁾ *	=	2°59'52"
w	=	

Pressures (Energies)**Energy**

E _{max}	=	8.8 Joule
E _K	=	9.4 Joule
E _E	=	9.7 Joule

Barrel

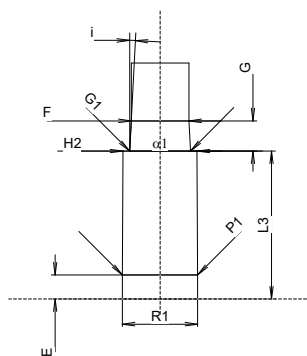
F ¹⁾ *	=	7.63
Z ¹⁾	=	7.83

Grooves

b	=	2.69
N	=	6
u	=	250.00
Q	=	47.37 mm ²

Miscellaneous Dimensions

Fe ¹⁾⁶⁾	=	0.30
delta L	=	



Scale 1:1

Dimensions in << mm >>
Dimensions and Tolerances for Proof Barrels
see Appendix CR 1.

Notes: 1) Check for safety reasons
6) Headspace on Case Mouth
* Basic dimensions