

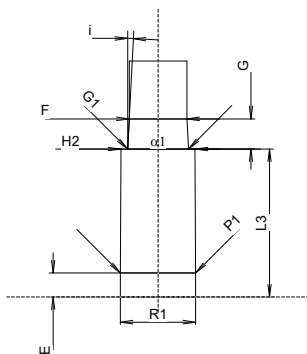
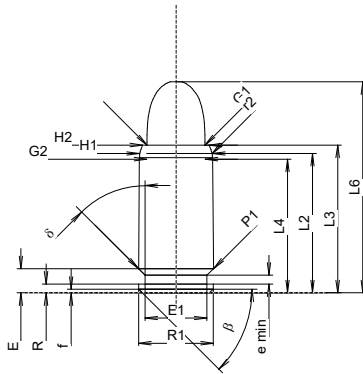
**C.I.P.****9 mm MT-X**

TAB. X

Date 22-04-26

Pays d'origine: SI

Révision

**CARTOUCHE MAXI****Longueurs**

L1	=		
L2	=	18.45	
L3 1)	=	19.55	-0.20
L4	=	17.70	
L5	=		
L6	=	27.90	

**Culot**

R	=	1.19	-0.15
R1	=	9.86	-0.16
R3	=		
E	=	3.20	
E1	=	8.20	-0.16
e min	=	1.15	
delta	=	45°	
f	=	0.50	
beta	=	45°	

**Chambre à poudre**

P1	=	9.92	-0.16
P2	=		

**Cône de raccordement**

alpha	=		
S	=		
r1 min	=		
r2	=	3.00	

**Collet**

H1 *	=	9.65	-0.16
H2 1)	=	8.80	-0.16

**Projectile**

G1 1)	=	7.65	
G2	=	7.75	
F	=		
L3+G 1)	=	23.56	

**Pressions (Énergies)****Énergie**

E <sub>max</sub>	=	8.8 Joule	
E <sub>K</sub>	=	9.4 Joule	
E <sub>E</sub>	=	9.7 Joule	

**Autres indications**

Fe 1)6)	=	0.30	
delta L	=		

**CHAMBRE MINI****Longueurs**

L1	=		
L2	=		
L3 1)	=	19.55	

**Cuvette**

R	=		
R1	=	9.96	
R2	=		
R3	=		
r	=		

**Chambre à poudre**

E	=	3.18	
P1 1)	=	9.94	
P2	=		

**Cône de raccordement**

alpha	=		
S	=		
r1 max	=		
r2	=		

**Collet**

H1	=		
H2 1)	=	9.82	

**Prise de rayures**

G1 1)*	=	8.05	
G 1)	=	4.01	
alpha 1 *	=	180°	
h	=		
s	=		
i 1)*	=	2°59'52"	
w	=		

**Canon**

F 1)*	=	7.63	
Z 1)	=	7.83	

**Rayures**

b	=	2.69	
N	=	6	
u	=	250.00	
Q	=	47.37	mm <sup>2</sup>

Échelle 1:1

Dimensions en << mm >>  
Dimensions et tolérances pour les canons  
d'épreuve: Voyez Annexe CR 1.

Notes: 1) A' contrôler pour la sécurité  
6) Feuillure sur la bouche  
\* Dimensions de base