

C.I.P.**20 mm x 67,5 (6,3/14)**

TAB. X

Datum 00-03-13

Revision 02-05-15

Ursprungsland: DE

PATRONE MAXI**PATRONENLAGER MINI****Längen**

L1	=		
L2	=		
L3 ¹⁾	=	67.50	-2.50
L4	=		
L5	=		
L6 ¹⁾	=	65.00	-2.50

Längen

L1	=		
L2	=		
L3 ¹⁾	=	74.90	

Hülsenboden

R ¹⁾	=	2.80	-0.20
R1 ¹⁾	=	22.45	-0.20
R3	=		
E	=		
E1	=		
e min	=		
δ	=		
f	=		
β	=		

Stossboden

R ¹⁾	=	2.40	+0.10
R1 ¹⁾	=	22.55	+0.10
R2	=		
R3	=		
r	=		

Pulverkammer

P1 ¹⁾	=	20.60	-0.10
P2	=		

Pulverkammer

E	=		
P1 ¹⁾	=	20.65	+0.10
P2	=		

Schulterkonus

α	=		
S	=		
r1 min	=		
r2	=		

Schulterkonus

α	=		
S	=		
r1 max	=		
r2	=		

Hülsenhals

H1	=		
H2 ¹⁾	=	20.20	-0.25

Hülsenhals

H1	=		
H2 ¹⁾	=	20.35	+0.10

Geschoß

G1	=		
G2	=		
F	=		
L3+G	=		

Übergang

G1	=		
G	=		
α1	=	180°	
h	=		
s	=		
i	=		
w	=		

Drücke (Energien)**Mechan. elektr. Wandler**

Pmax	=	4300 bar	
PK	=	4945 bar	
PE	=	5590 bar	
M	=	25.00	

Lauf

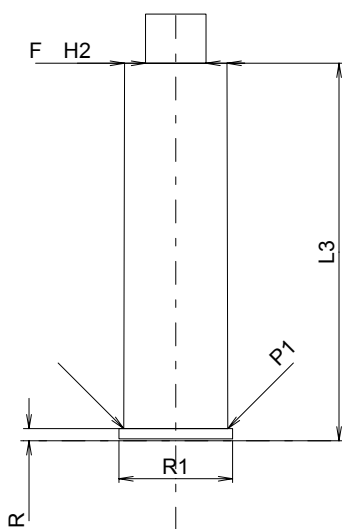
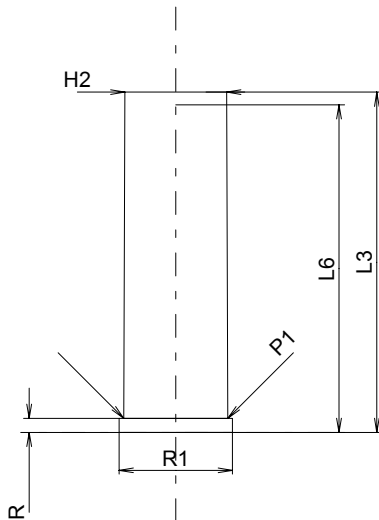
F ^{1)*}	=	12.00	+0.10
Z	=		

Züge

b	=		
N	=		
u	=		
Q	=		mm ²

Verschiedene Daten

Fe	=		
delta L	=		



Maßstab 1:1.5

Maße in << mm >>
Maße und Toleranzen für Messläufe
siehe Anhang CR 1.

Bemerkungen: 1) Kontrolle aus Sicherheitsgründen
* Grundmaße