

**C.I.P.****6,2/7**

TAB. X

Datum 01-04-24

Revision 02-05-15

Ursprungsland: FR

**PATRONE MAXI****Längen**

L1	=	
L2	=	
L3 <sup>1)</sup>	=	7.40
L4	=	
L5	=	
L6 <sup>1)</sup>	=	7.25

**Hülsenboden**

R	=	0.55
R1	=	7.80
R3	=	
E	=	
E1	=	
e min	=	
δ	=	
f	=	
β	=	

**Pulverkammer**

P1	=	6.20
P2	=	

**Schulterkonus**

α	=	
S	=	
r1 min	=	
r2	=	

**Hülsenhals**

H1	=	
H2 <sup>1)</sup>	=	6.20

**Geschoß**

G1	=	
G2	=	
F	=	
L3+G	=	

**Drücke (Energien)****Energie**

E <sub>max</sub>	=	60.0 Joule
E <sub>K</sub>	=	64.0 Joule
E <sub>E</sub>	=	66.0 Joule

**Verschiedene Daten**

Fe	=	
delta L	=	

**PATRONENLAGER MINI****Längen**

L1	=	
L2	=	
L3 <sup>1)</sup>	=	7.50 +0.10

**Stossboden**

R <sup>1)</sup>	=	0.60
R1	=	7.90
R2	=	
R3	=	
r	=	0.30

**Pulverkammer**

E	=	
P1 <sup>1)</sup>	=	6.25
P2	=	

**Schulterkonus**

α	=	
S	=	
r1 max	=	
r2	=	

**Hülsenhals**

H1	=	
H2 <sup>1)</sup>	=	6.25

**Übergang**

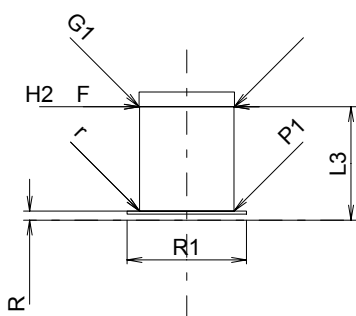
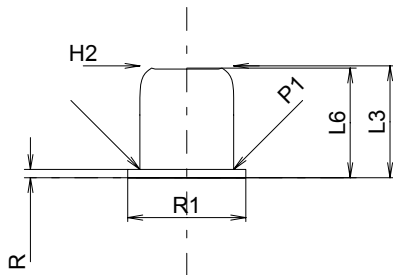
G1*	=	6.30
G	=	
α1	=	
h	=	
s	=	
i	=	
w	=	

**Lauf**

F*	=	6.30
Z	=	

**Züge**

b	=	
N	=	
u	=	
Q	=	mm <sup>2</sup>



Maßstab 2:1

Maße in << mm >>  
Maße und Toleranzen für Messläufe  
siehe Anhang CR 5.

Bemerkungen: 1) Kontrolle aus Sicherheitsgründen  
\* Grundmaße