

C.I.P.

20 mm x 67,5 (6,3/14)

TAB. X
Date 00-03-13

Country of Origin: DE

Revision 02-05-15
CARTRIDGE MAXI
CHAMBER MINI
Lengths

L1	=		
L2	=		
L3 ¹⁾	=	67.50	-2.50
L4	=		
L5	=		
L6 ¹⁾	=	65.00	-2.50

Lengths

L1	=		
L2	=		
L3 ¹⁾	=	74.90	

Case Head

R ¹⁾	=	2.80	-0.20
R1 ¹⁾	=	22.45	-0.20
R3	=		
E	=		
E1	=		
e min	=		
δ	=		
f	=		
β	=		

Breech

R ¹⁾	=	2.40	+0.10
R1 ¹⁾	=	22.55	+0.10
R2	=		
R3	=		
r	=		

Powder Chamber

P1 ¹⁾	=	20.60	-0.10
P2	=		

Powder Chamber

E	=		
P1 ¹⁾	=	20.65	+0.10
P2	=		

Junction Cone

α	=		
S	=		
r1 min	=		
r2	=		

Junction Cone

α	=		
S	=		
r1 max	=		
r2	=		

Collar

H1	=		
H2 ¹⁾	=	20.20	-0.25

Collar

H1	=		
H2 ¹⁾	=	20.35	+0.10

Projectile

G1	=		
G2	=		
F	=		
L3+G	=		

Commencement of Rifling

G1	=		
G	=		
α1	=	180°	
h	=		
s	=		
i	=		
w	=		

Pressures (Energies)
Method Transducer

Pmax	=	4300 bar	
PK	=	4945 bar	
PE	=	5590 bar	
M	=	25.00	

Barrel

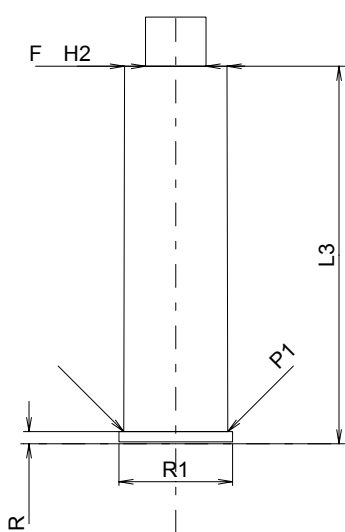
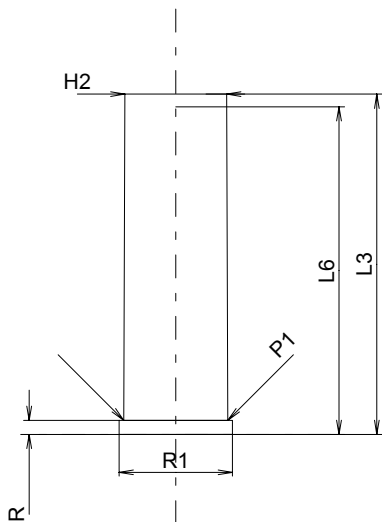
F ¹⁾ *	=	12.00	+0.10
Z	=		

Grooves

b	=		
N	=		
u	=		
Q	=		mm ²

Other Indications

Fe	=		
delta L	=		



Scale 1:1.5

 Dimensions in << mm >>
 Dimensions and Tolerances for Proof Barrels
 see Appendix CR 1.

 Notes: 1) Check for safety reasons
 * Basic dimensions