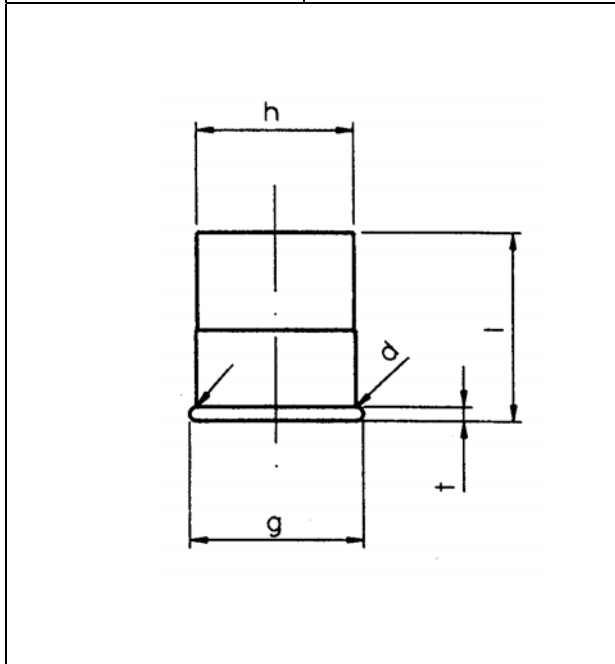


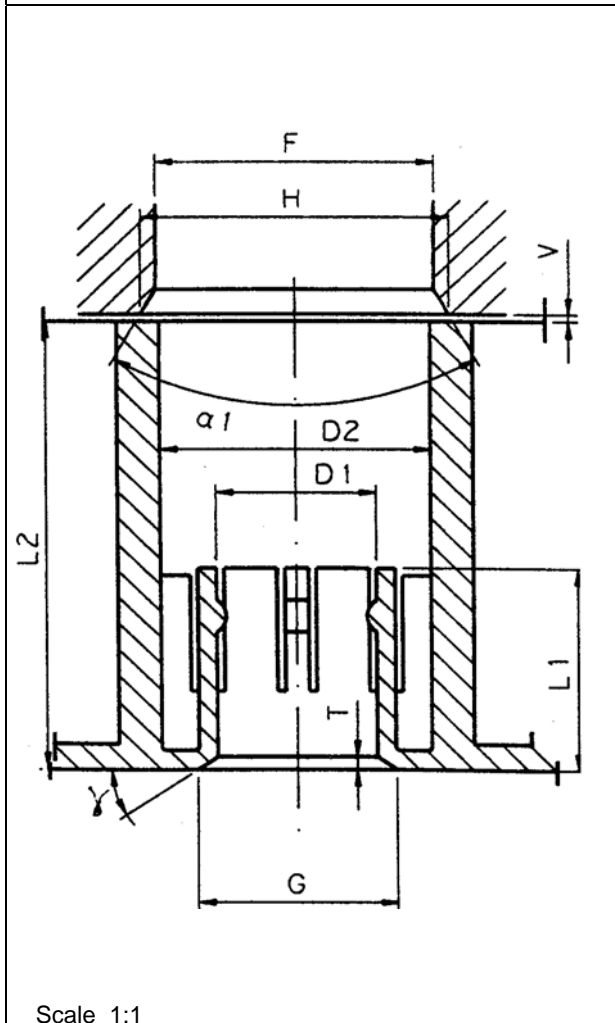
<b>C.I.P.</b>	<b>MR 35 Punch cal. 12-35</b> Country of Origin: FR	<b>TAB. X</b>
		<b>Date 96-02-21</b>
		<b>Revision 98-06-09</b>



**CARTRIDGE MAXIMALE**

Dimens. Value Toler.

- d<sup>1)</sup> = 20.60 - 0.28
- g = 22.45 - 0.48
- t<sup>1)</sup> = 1.85 - 0.35
- h = 20.20 - 0.47
- l = 25.00 - 2.50



**CHAMBER MINIMALE**

Dimens. Value Toler.

- D1<sup>1)</sup> = 20.60
- L1<sup>1)</sup> = 27.00
- G mini<sup>1)</sup> = 25.80
- T mini<sup>1)</sup> = 1.70
- B<sup>1)</sup> = 33°10'42"
- D2 mini<sup>1)</sup> = 35.00
- L2<sup>1)</sup> = 60.05 - 0.30
- V<sup>1)</sup> = 0.95 - 0.70
- H<sup>1)</sup> =
- F mini<sup>1)</sup> = 36.00
- alpha 1<sup>1)</sup> = 60°

Energy

Emax	EK	EE
	Joule	
115	125	130

Scale 1:1

Dimensions in « mm »  
Dimensions and tolerances for Proof Barrels:

Notes : 1) Check for Safety reasons