

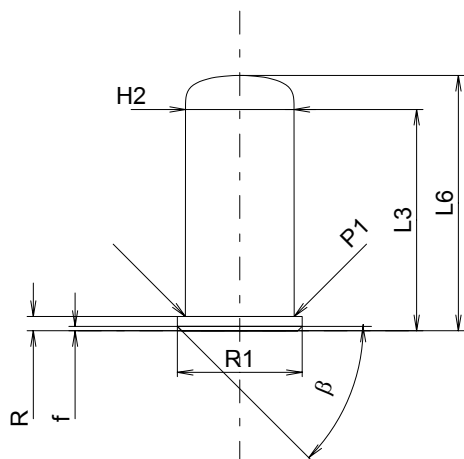
**C.I.P.****380 Alfa**

TAB. X

Date 01-05-17

Revision 02-05-15

Country of Origin: CZ

**CARTRIDGE MAXI****Lengths**

L1	=	
L2 *	=	19.40
L3 <sup>1)</sup>	=	19.50
L4	=	
L5	=	
L6	=	22.50

**Case Head**

R	=	1.25
R1	=	11.00
R3	=	
E	=	
E1	=	
e min	=	
delta	=	
f	=	0.38
beta	=	45°

**Powder Chamber**

P1	=	9.58
P2	=	

**Junction Cone**

alpha	=	
S	=	
r1 min	=	
r2	=	

**Collar**

H1	=	
H2 <sup>1)</sup>	=	9.57

**Projectile**

G1	=	
G2	=	
F	=	
L3+G	=	

**Pressures (Energies)****Method Transducer**

Pmax	=	300 bar
PK	=	345 bar
PE	=	390 bar
M	=	10.50

**Other Indications**

Fe	=	
delta L	=	

**CHAMBER MINI****Lengths**

L1	=	
L2	=	
L3 <sup>1)</sup>	=	19.50

**Breech**

R <sup>1)</sup>	=	1.35
R1	=	11.05
R2	=	
R3	=	
r	=	

**Powder Chamber**

E	=	
P1 <sup>1)</sup>	=	9.60
P2	=	

**Junction Cone**

alpha	=	
S	=	
r1 max	=	
r2	=	

**Collar**

H1	=	
H2 <sup>1)</sup>	=	9.60

**Commencement of Rifling**

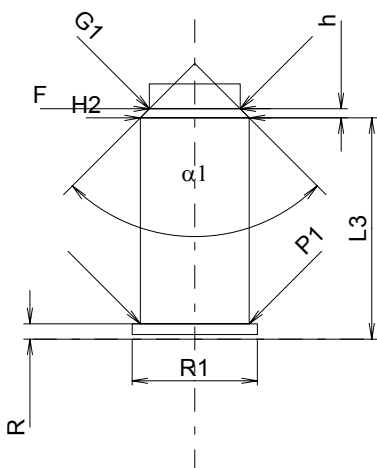
G1 *	=	8.00
G	=	
alpha1	=	90°
h *	=	0.80
s	=	
i	=	
w	=	

**Barrel**

F <sup>1)</sup> *	=	8.00
Z <sup>1)</sup>	=	8.00

**Grooves**

b	=	
N	=	
u	=	
Q	=	50.27 mm <sup>2</sup>



Scale 1.5:1

Dimensions in << mm >>  
Dimensions and Tolerances for Proof Barrels  
see Appendix CR 1.

Notes: 1) Check for safety reasons  
\* Basic dimensions