

C.I.P.

45 Rubber

TAB. X

Date 09-05-05

Country of Origin: RU

Revision

CARTRIDGE MAXI

CHAMBER MINI

Lengths

Lengths

- L1 =
- L2 = 22.50
- L3 ¹⁾ = 22.81
- L4 =
- L5 =
- L6 ¹⁾ = 23.50

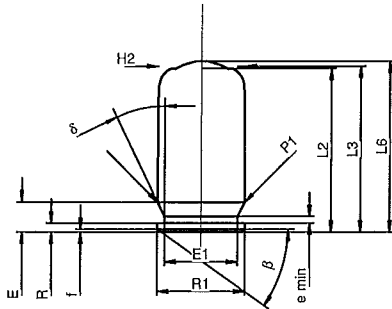
- L1 =
- L2 =
- L3 ¹⁾ = 19.97

Case Head

Breech

- R = 1.24
- R1 = 12.19
- R3 =
- E = 4.11
- E1 = 10.16
- e min = 0.89
- δ = 26°
- f = 0.38
- β = 35°

- R =
- R1 = 12.21
- R2 =
- R3 =
- r =



Powder Chamber

Powder Chamber

- P1 = 12.09
- P2 =

- E = 3.75
- P1 ¹⁾ = 12.18
- P2 =

Junction Cone

Junction Cone

- α =
- S =
- r1 min =
- r2 =

- α =
- S =
- r1 max =
- r2 =

Collar

Collar

- H1 =
- H2 ¹⁾ = 12.01

- H1 =
- H2 ¹⁾ = 12.03

Projectile

Commencement of Rifling

- G1 =
- G2 =
- F =
- L3+G =

- G1 = 10.00
- G =
- $\alpha 1$ = 60°
- h = 1.76
- s =
- i =
- w =

Pressures (Energies)

Method Transducer

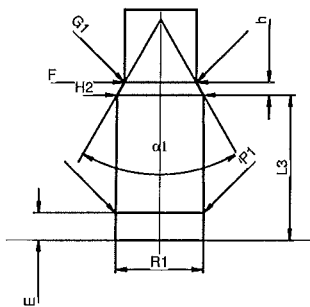
- Pmax = 600 bar
- PK = 690 bar
- PE = 780 bar
- M = 12.50

Barrel

- F = 10.00
- Z =

Grooves

- b =
- N =
- u =
- Q = 78.54 mm²



Miscellaneous Dimensions

- Fe =
- delta L =

Scale 1:1

Dimensions in << mm >>
Dimensions and Tolerances for Proof Barrels
see Appendix CR 5.

Notes: 1) Check for safety reasons