

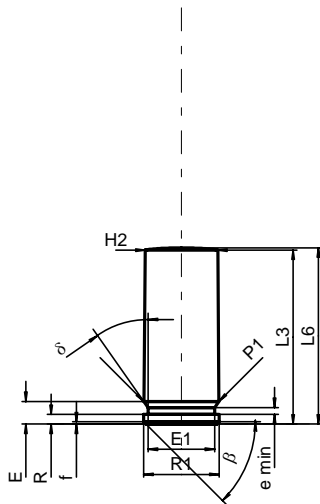
**C.I.P.****10 x 23 T**

TAB. X

Date 05-05-25

Country of Origin: RU

Revision

**CARTRIDGE MAXI****Lengths**

L1	=	
L2	=	22.70
L3 <sup>1)</sup>	=	23.00
L4	=	
L5	=	
L6 <sup>1)</sup>	=	23.30

**Case Head**

R	=	1.27
R1	=	9.96
R3	=	
E	=	2.98
E1	=	8.79
e min	=	0.90
delta	=	35°
f	=	0.30
beta	=	45°

**Powder Chamber**

P1	=	9.93
P2	=	

**Junction Cone**

alpha	=	
S	=	
r1 min	=	
r2	=	

**Collar**

H1	=	
H2 <sup>1)</sup>	=	9.62

**Projectile**

G1	=	
G2	=	
F	=	
L3+G <sup>1)</sup>	=	43.00

**Pressures (Energies)****Method Transducer**

Pmax	=	550 bar
PK	=	633 bar
PE	=	715 bar
M	=	10.50

**Miscellaneous Dimensions**

Fe	=	
delta L	=	

**CHAMBER MINI****Lengths**

L1	=	
L2	=	
L3 <sup>1)</sup>	=	21.20

**Breech**

R	=	
R1	=	10.00
R2	=	
R3	=	
r	=	

**Powder Chamber**

E	=	2.98
P1 <sup>1)</sup>	=	9.98
P2	=	

**Junction Cone**

alpha	=	
S	=	
r1 max	=	
r2	=	

**Collar**

H1	=	
H2 <sup>1)</sup>	=	9.65

**Commencement of Rifling**

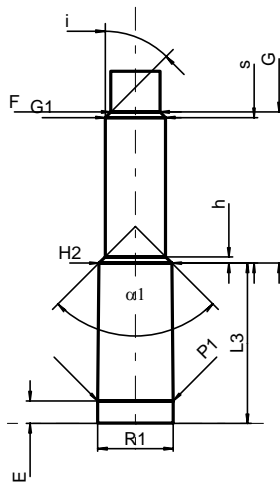
G1	=	8.00
G	=	20.00
alpha1	=	90°
h	=	0.82
s	=	19.25
i	=	45°
w	=	

**Barrel**

F	=	6.50
Z	=	

**Grooves**

b	=	
N	=	
u	=	
Q	=	33.17 mm <sup>2</sup>



Scale 1:1

Dimensions in << mm >>  
Dimensions and Tolerances for Proof Barrels  
see Appendix CR 1.

Notes: 1) Check for safety reasons