

C.I.P.**6,2/7**

TAB. X

Date 01-04-24

Pays d'origine: FR

Révision 02-05-15

CARTOUCHE MAXI**CHAMBRE MINI****Longueurs**

L1	=	
L2	=	
L3 ¹⁾	=	7.40
L4	=	
L5	=	
L6 ¹⁾	=	7.25

Longueurs

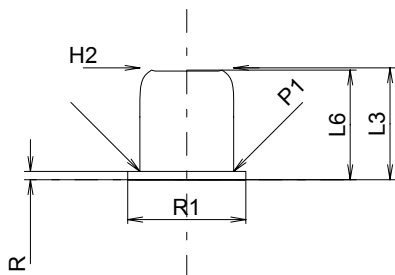
L1	=	
L2	=	
L3 ¹⁾	=	7.50 +0.10

Culot

R	=	0.55
R1	=	7.80
R3	=	
E	=	
E1	=	
e min	=	
δ	=	
f	=	
β	=	

Cuvette

R ¹⁾	=	0.60
R1	=	7.90
R2	=	
R3	=	
r	=	0.30

**Chambre à poudre**

P1	=	6.20
P2	=	

Chambre à poudre

E	=	
P1 ¹⁾	=	6.25
P2	=	

Cône de raccordement

α	=	
S	=	
r1 min	=	
r2	=	

Cône de raccordement

α	=	
S	=	
r1 max	=	
r2	=	

Collet

H1	=	
H2 ¹⁾	=	6.20

Collet

H1	=	
H2 ¹⁾	=	6.25

Projectile

G1	=	
G2	=	
F	=	
L3+G	=	

Prise de rayures

G1*	=	6.30
G	=	
α1	=	
h	=	
s	=	
i	=	
w	=	

Pressions (Énergies)**Énergie**

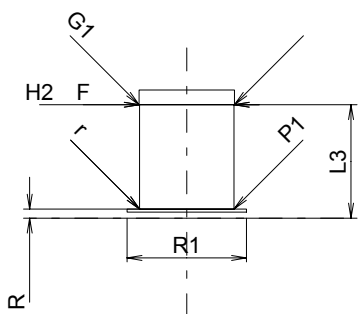
E _{max}	=	60.0 Joule
E _K	=	64.0 Joule
E _E	=	66.0 Joule

Canon

F*	=	6.30
Z	=	

Rayures

b	=	
N	=	
u	=	
Q	=	mm ²



Échelle 2:1

Dimensions en << mm >>
Dimensions et tolérances pour les canons
d'épreuve: Voyez Annexe CR 5.

Notes: 1) A' contrôler pour la sécurité
* Dimensions de base